

Nurse Practitioners (NPs) in Primary Healthcare (PHC): A Paradigm Shift Towards Social Justice

Dr Sue Adams PhD, RN (Tautiwi, Senior Lecturer, National Coordinator–Tangata Tiriti NP & EN Workforce Programme)

Ebony Komene BNurs (Hons), RN (Ngāpuhi, Ngāti Pikiao, Ngāti Whakaue, Tapuika)

Presentation to Te Tai Tokerau Nursing Conference 2023

7th November 2023



The Global and Aotearoa Context

- Global health workforce issues
- Medical doctor centric primary care
- Chronic/long-term conditions
- Health inequities
- COVID-19

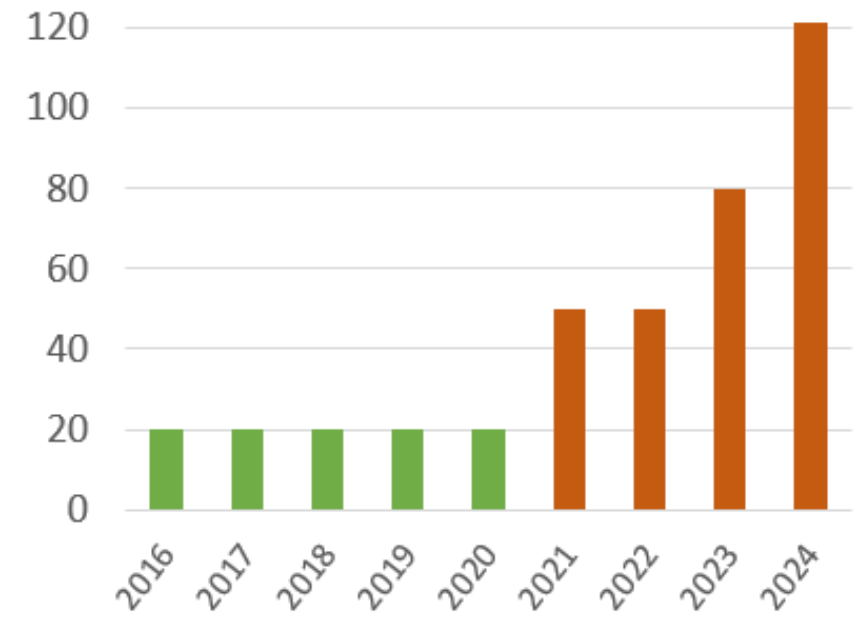
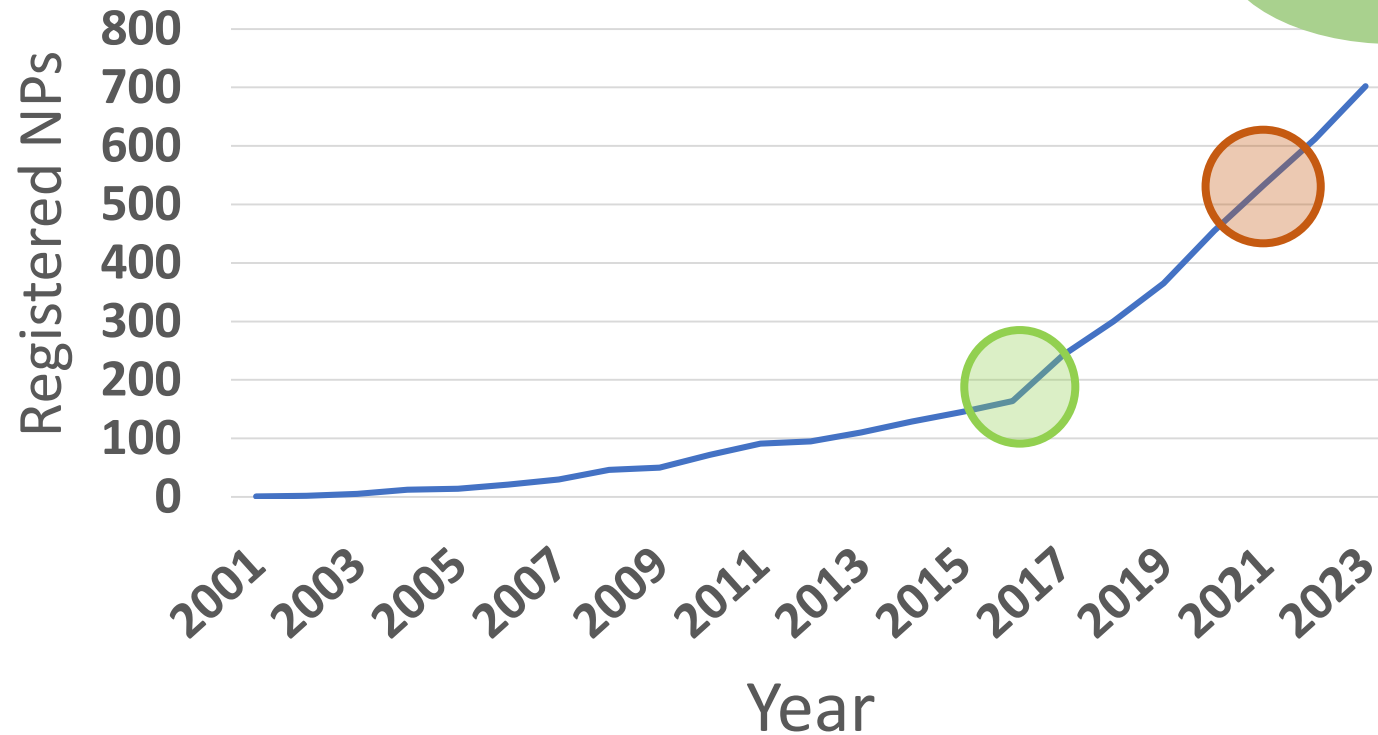




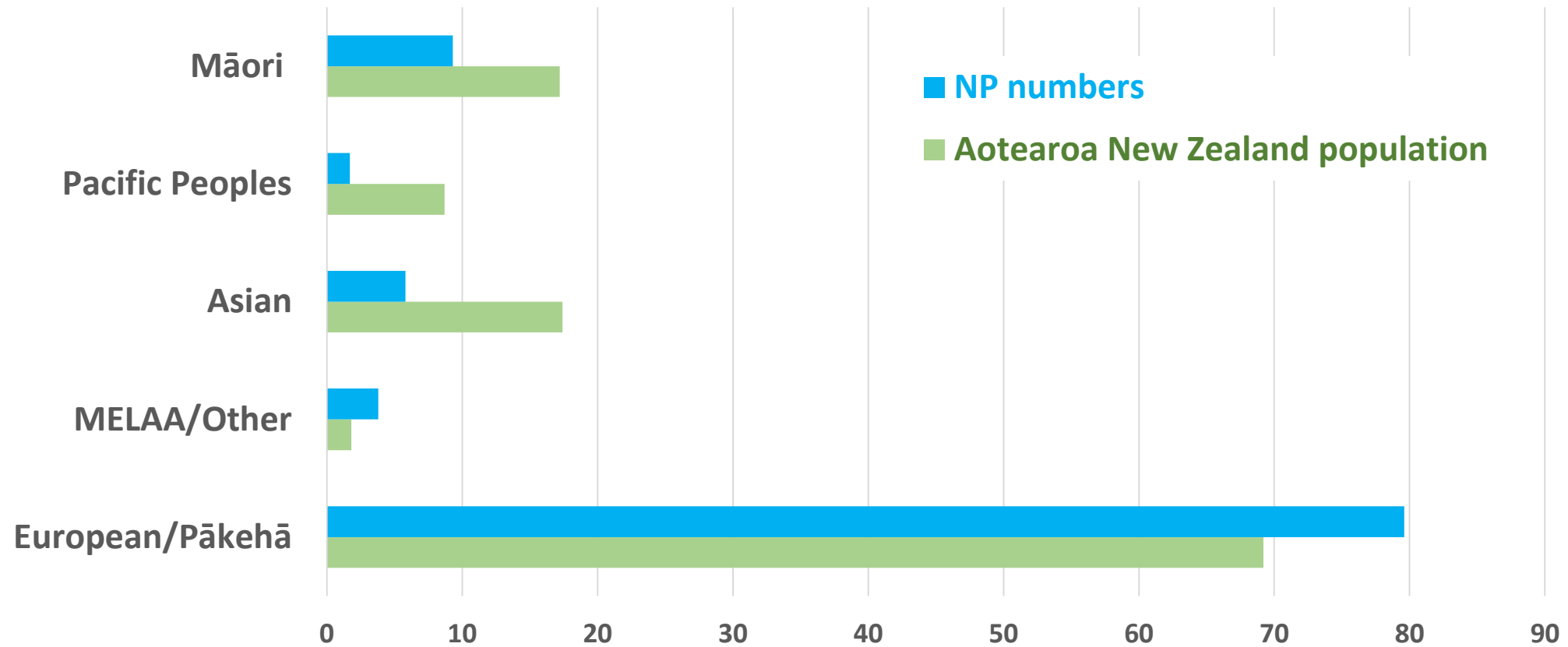
"NPs offer opportunities for transformational health system change."

Total number of NPs registered with NCNZ through to end March 2023

NPTP places since 2016



Ethnicity % of NPs and Aotearoa population (March 2022)





Te Kaunihera Tapuhi o Aotearoa Nursing Council of New Zealand

NP Scope of Practice

Mātanga tapuhi (NPs) undertake advanced training, enabling them to practice both autonomously and collaboratively to enhance health outcomes for communities. Leading patient care episodes, they partner with patients and their families. Their expertise encompasses advanced nursing techniques, diagnostic reasoning, and therapeutic knowledge. They can diagnose and manage both common and complex conditions, order tests, prescribe medicines, and handle patient admissions and discharges across various healthcare settings.

Integrative Literature Review

Review Aim:

To develop a framework to guide the successful integration of NPs into PHC settings from an individual, organizational, and sectoral perspective to deliver healthcare services grounded within a social justice paradigm.



Search Terms

Population

- “Nurse Practitioner” OR “Advanced Practice Nurse”

Intervention

- “Primary Health*” OR “Community Health*” OR “Family Health” OR Neighbourhood OR Family OR Primary OR District OR Community

Outcome

- Integrate OR Implement* OR Introduc* OR Induction OR Internship OR Establish* OR Transition OR Novice OR “Organizational Climate”

Search Outcome

Studies included in review (n = 28)

Reports
of
included
studies

Qualitative (n = 22)

Mixed methods (n = 2)

Evaluation (n = 1)

Discursive paper (n = 3)

Data Synthesis



Macro level focuses on broad social structures, institutions, encompassing aspects like regulations, policies, and the foundation of health.

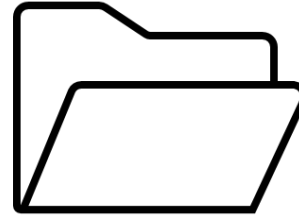


Meso level examines the health provider organizations within the larger health context and how they operate within the macro health system, for example, health management bodies and clinics



Micro level is the most specific or individualized level of analysis concentrating on individual behavior and interpersonal interactions.

Overview of Articles Reviewed



Types of articles:

Qualitative

Mixed-methods

Evaluation

Discursive

Geographic distribution:

Canada

USA

New Zealand

Australia

Scotland





Thematic Analysis

Autonomy and agency

Awareness and visibility

Shared vision

Leadership

Funding and infrastructure

Intentional support and self-care

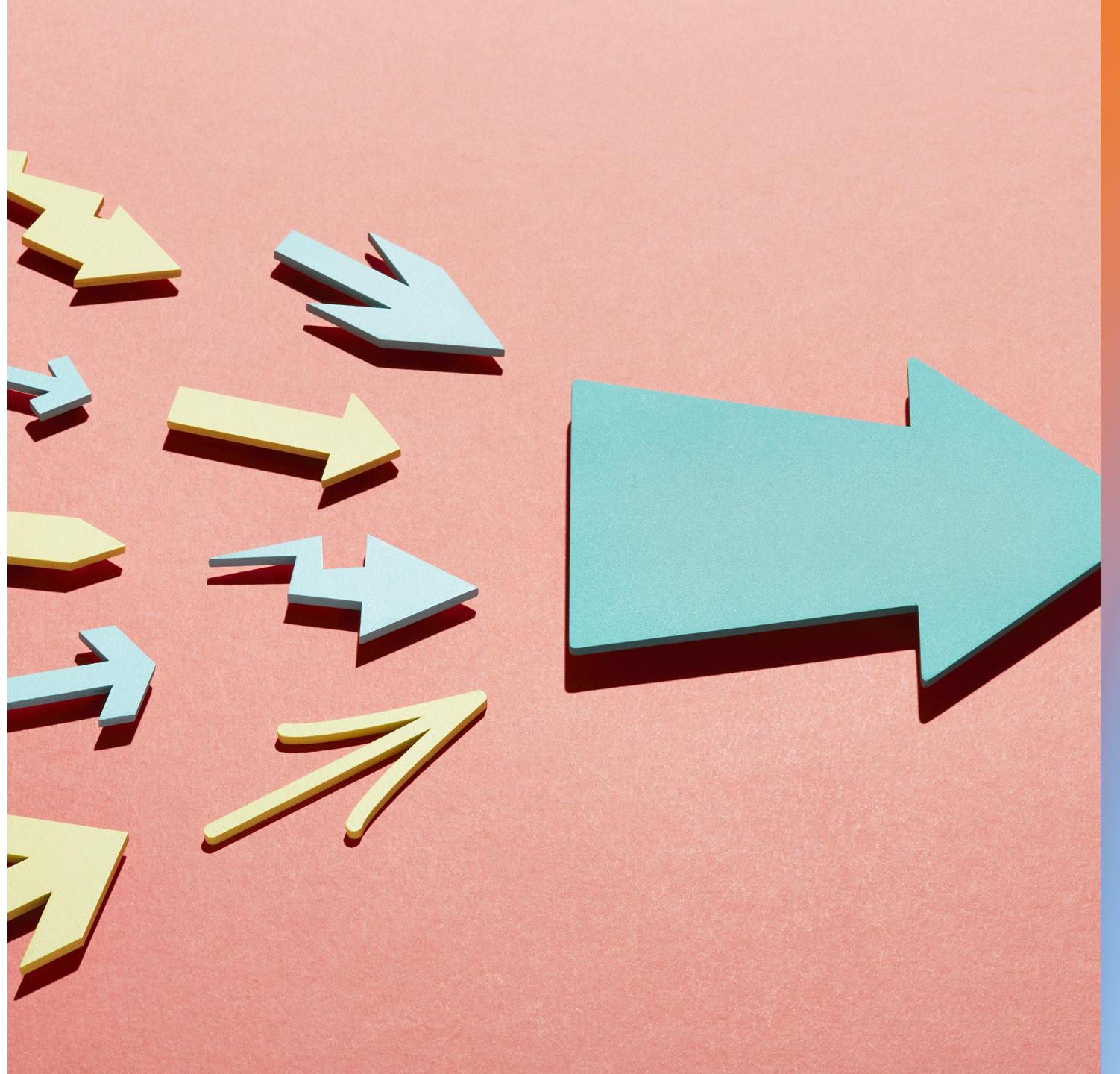
Model for NP Integration

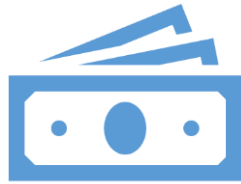
Accepted for publication Journal of Advanced Nursing
Adams et al., (2024)

Future Directions

Refine and test the framework

- NPs working with specific communities
- NPs working with Indigenous communities
- Indigenous NPs
- Evaluation outcomes





Funding: Health Research Council
New Zealand



Contributions: Sue Adams, Ebony
Komene, Josephine Davis, Cynthia
Wensley & Jenny Carryer



Let's connect



Ebony Komene –
ebony.komene@auckland.ac.nz



Sue Adams –
s.adams@auckland.ac.nz



Ngā patai/Questions?