



Ngā Tai Ora

PUBLIC HEALTH NORTHLAND

Promote Protect Prevent

Northland Population Health and Wellbeing Indicators Framework

Khan Buchwald-Mackintosh and Sunitha Gowda
Te Tai Mahere - Public Health Intelligence
Ngā Tai Ora - Public Health Northland

NORTHLAND DISTRICT HEALTH BOARD

August 2019



This document has been prepared as a reference guide to a list of population health and wellbeing indicators within a population health framework for Northland region.

Suggested citation:

Buchwald-Mackintosh K and Gowda S. 2019. Northland Population Health and Wellbeing Indicators Framework. Whangarei: Te Tai Mahere - Public Health Intelligence, Ngā Tai Ora – Public Health Northland, Northland District Health Board.

Disclaimer:

Every endeavour had been made to use accurate data definitions and data sources in this document. The document has been prepared on the basis of information available during 2018/2019 without any independent verification. This document cannot be used, altered, copied, or reproduced without the expressed consent or appropriate referencing. Every effort has been made to ensure that the information in this document is correct. Ngā Tai Ora, Northland DHB and the authors will not accept any liability for information which is incorrect, or any actions taken as a result of the information in this document.

Acknowledgement

Ngā Tai Ora, Northland District Health Board would like to acknowledge the **South Australian (SA) Government (Department for Health and Wellbeing)** for permitting the Northland District Health Board to use the 'South Australian Public Health Indicator Framework' as a basis for the development of the Northland Population Health and Wellbeing Indicators Framework.

The authors would also like to acknowledge the thorough process that spanned across three years and the exhaustive stakeholder consultation that the Department for Health and Wellbeing, South Australian Government have undertaken in the development of their framework. It was advantageous to have the framework already in place for us to then adapt to the Northland population. If not for the South Australian Government, it would have not been possible to draft this Indicators Framework. We are extremely thankful to the Department for Health and Wellbeing for allowing us to adapt their framework.

The authors would also like to acknowledge the team members of Te Tai Mahere – Public Health Intelligence, Anil Shetty and Briar Macken for their input in the development of the framework. It wouldn't have been possible to compile the list of measures without the valuable input from the members of the Public Health Northland – Ngā Tai Ora's leadership group which is greatly appreciated.

Table of Contents

Acknowledgement.....	ii
Table of Contents.....	iii
Section 1.....	1
Background.....	1
Purpose.....	1
Objective.....	1
Section 2.....	2
The Framework.....	2
Domains.....	2
Indicator Groups.....	3
Indicators.....	4
Measures.....	4
Selection criteria for the measures.....	5
Section 3.....	6
List of indicators and associated measures.....	6
Domain: Population.....	6
Domain: Promote.....	7
Domain: Protect.....	9
Domain: Prevent.....	11
Domain: Health Outcomes.....	13
Section 4.....	16
Library of measures for the whole population.....	16
POPULATION.....	16
PROMOTE.....	18
PROTECT.....	30
PREVENT.....	36
HEALTH OUTCOMES.....	43
Section 5.....	52
List of measures that are identified as gaps for the Northland population health and wellbeing indicators framework.....	52
Domain: Population.....	52
Domain: Promote.....	52
Domain: Protect.....	52
Domain: Prevent.....	53
Domain: Health Outcomes.....	53
List of data sources for the Northland population health and wellbeing indicators framework.....	55

Section 1

Background

Public Health Intelligence involves the collection, analysis, reporting and ongoing monitoring of population health status, the social and economic environment, the physical environment, the person's individual characteristics and behaviours and the cultural aspects that influence the wellbeing of a population.

To be able to undertake a systematic analysis and provide concise information on the health status of the population, the current trends, and the future projections, a comprehensive list of standard population health indicators was required. Hence, the Public Health Intelligence team compiled a 'Northland Population Health and Wellbeing Indicators Framework'.

Purpose

The purpose of this document is to enlist the population health and wellbeing indicators within a framework that would not only assist in the systematic analysis of the health needs of the population, but also help identify the gaps in the availability of information and comprehend the underlying factors that contribute to the ill-health of the Northland population.

Objective

The objectives of the 'Northland Population Health and Wellbeing Indicators Framework' are to:

- Prioritise indicators for Northland population health and wellbeing profile
- Guide the monitoring of health needs and health priorities at regional level
- Contribute to the availability and access to nationally consistent and quality databases of health indicators
- Facilitate the use of population health and wellbeing indicators in the future planning and funding of health services for Northland
- Promote greater alignment of the use of population health and wellbeing indicators across the health sector and the non-health sector.

Section 2

The Framework

For the purpose of providing an overview and organising of the indicators and measures, a hierarchy of groupings was adapted from the 'South Australian Public Health Indicators Framework'¹.

Figure 1 presents the groupings of the population health and wellbeing indicators framework.

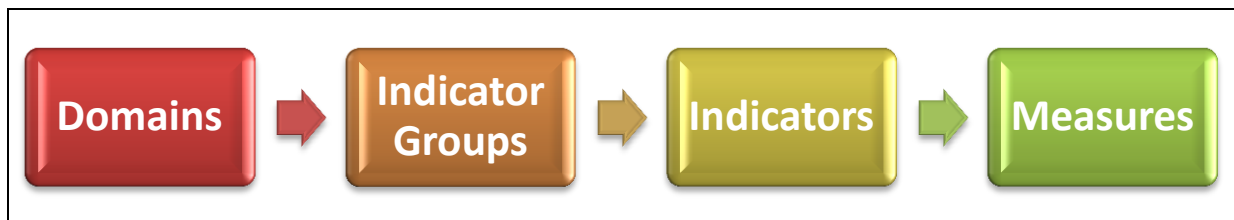


Figure 1. Groupings of the population health and wellbeing indicators framework

The framework includes a list of all prioritised 'measures' which are grouped together under each 'Indicator'. The 'Indicators' are further grouped together under an 'Indicator Group'. The indicator groups are further clustered under an overarching 'domain'.

Domains

The domains (Figure 2) are the first tier of groupings in the framework.

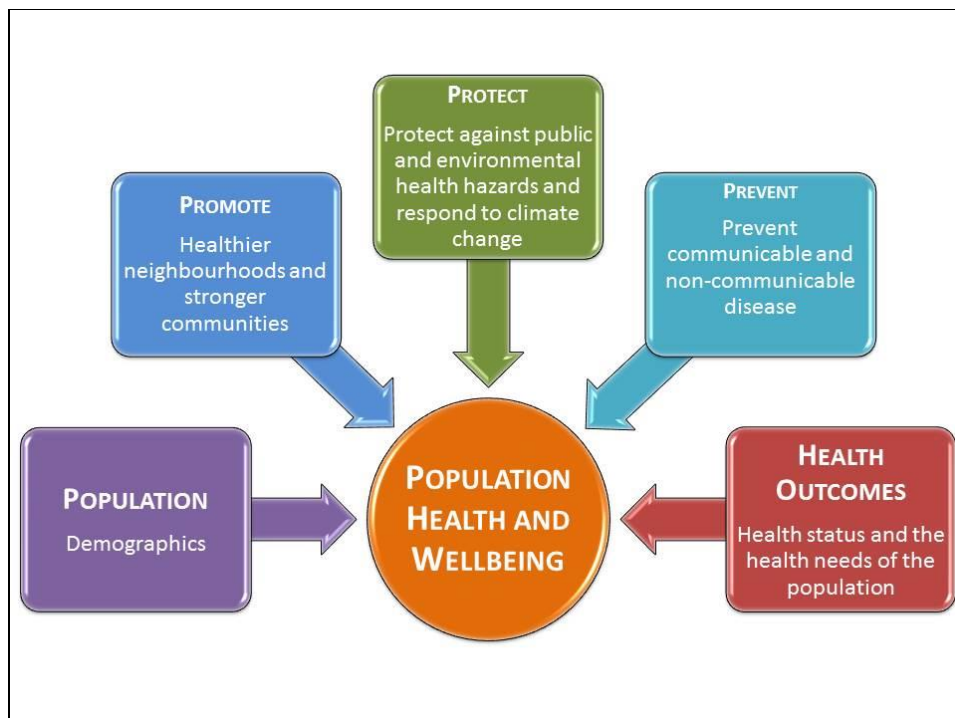


Figure 2. Domains of the Population Health and Wellbeing Indicators Framework

¹ Government of South Australia. (2018). Public Health Indicator Framework 2018. Retrieved January 2019, from <https://www.sahealth.sa.gov.au/wps/wcm/connect/0427c38041be856297519fbde9b79454/SAPublicHealthIndicatorsFramework+2018v3.pdf?MOD=AJPERES&CACHEID=ROOTWORKSPACE-0427c38041be856297519fbde9b79454-mKOQ50N>.

Domain is the highest level of categorisation that represents an overarching theme of population health and wellbeing. The first domain is ‘**Population**’. The domain of population includes the population demographics, population density and the rurality of the region.

The other three domains reflect the core functions of public health - **Promote** healthier neighbourhoods and stronger communities; **Protect** against environmental hazards, and **Prevent** communicable and non-communicable disease. The domain ‘Promote’ reflects the wider social, economic, cultural determinants of health that contribute to the health status of the population. The domain ‘Protect’ includes the environmental factors that impact on the health of the population. The domain ‘Prevent’ focusses on the modifiable risk factors and the protective factors that play a pivotal role in the health of the population.

The last domain of ‘**Health Outcomes**’ includes indicators pertaining to the health status of the population. The Health Outcomes domain includes the life expectancy, quality of life, mortality the prevalence and occurrence of disease in the population based on the presentations and admissions to primary care and secondary care services.

Indicator Groups

The next level is the ‘Indicator Group’ (Table 1) which groups certain indicators under a common subtheme. The ‘Indicator Group’ represents key traits that describe the health status of the population. The indicator groups also provide an indication of the breadth of public and population health action that contribute to the health outcomes of the population.

Table 1. The domains and their respective indicator groups.

Domain	Indicator Groups
POPULATION	<ul style="list-style-type: none"> • Demographics
PROMOTE Healthier neighbourhoods and stronger communities	<ul style="list-style-type: none"> • Socioeconomic Environment • Built Environment • Community Safety
PROTECT Protect against public and environmental health hazards and respond to climate change	<ul style="list-style-type: none"> • Climate Change • UV Exposure • Air • Water • Border Health • Hazardous Substances • Biotoxins • Home Health
PREVENT Prevent communicable and non-communicable disease	<ul style="list-style-type: none"> • Modifiable Risk Factors • Protective Factors
HEALTH OUTCOMES Health status and the health needs of the population	<ul style="list-style-type: none"> • Life Expectancy • Mortality • Quality of Life • Reproductive Health • Preventable Chronic Conditions • Communicable Disease • Utilisation of Health Services

Indicators

The third level is a list of 'Indicators' under each of the indicator group. The indicator is a congregated name for a list of measures.

Measures

A list of measures are organised for each indicator, indicator groups and the domain. Details of the measure are compiled that includes the data definition with information on counts, proportion, rate per population; the source of data, the frequency/interval of the availability of the data, the possible stratification by age (A), gender (G), ethnicity (E), location (L), deprivation (D), disability (DS), sexual orientation (SO) and rural (RU) and whether the data is available by single-year ages or age groups (Figure 3). Stratification by region is included if the region can be divided into smaller subgroups (i.e. territorial authorities, statistical areas, census are units etc.).

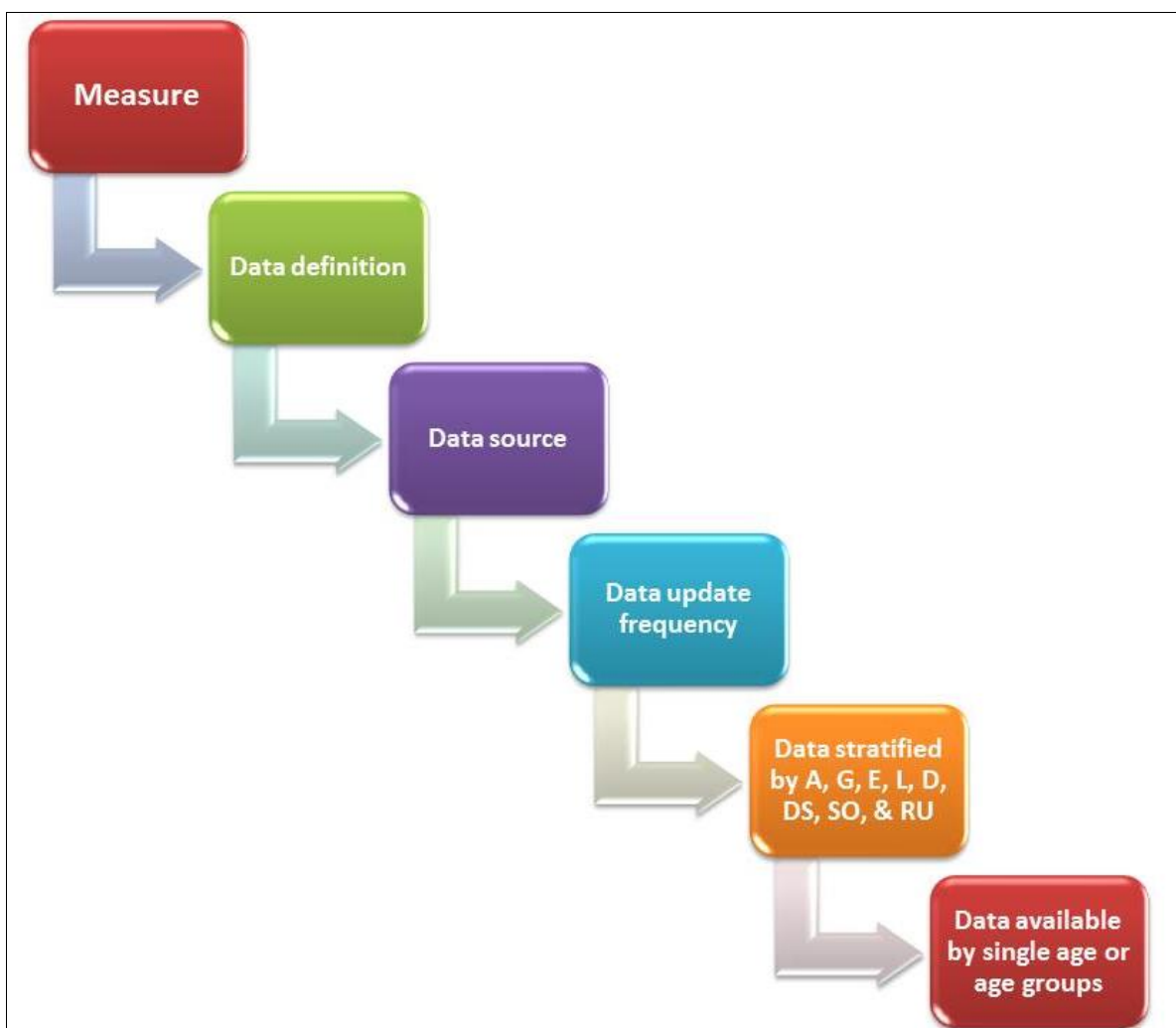


Figure 3. The description of the measures.

The library of measures with the descriptions presented in Figure 3 is listed in Section 4. In addition, the measures have further been grouped for specific age groups following a 'Life course' approach. This approach has been taken to assess the health of the population from conception to end of life.

If a measure is available for single age or specific to a particular age group, then it is considered as age specific. However, if the measure cannot be stratified by specific age or age group then it is considered as measure for the whole population (Figure 4).

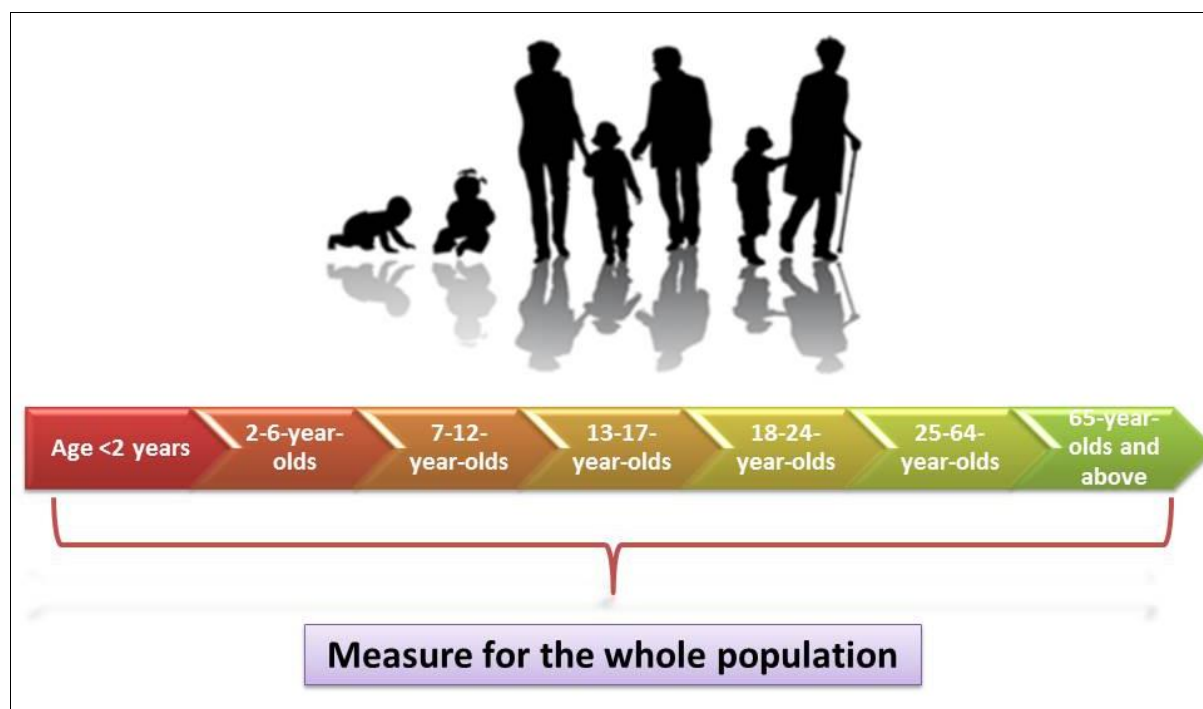


Figure 4. Life-course approach for the indicators.

Selection criteria for the measures

The selection criteria considered while assessing the inclusion or exclusion of the measure are presented below.

The measure was included in the framework, if it met the below criteria:

- ✚ Must be nationally or internationally established and accepted measure
- ✚ Contributes to assess the wellbeing of the population
- ✚ Provides information on the health status or burden of disease of the population
- ✚ Is Northland specific
- ✚ Is released frequently and on a regular basis
- ✚ Can be monitored over time
- ✚ Is not sourced from one-off surveys

The authors of this library hope that the framework improves the accessibility of data and consistency across all agencies to assess Northland's population health and wellbeing. When operating in a national environment with a plethora of underutilised data, the 'population health and wellbeing' framework aims to bridge the gap between the vast information that is available and evidence-based decision making.

Section 3

List of indicators and associated measures

Domain: Population

Indicator Group: Demographics	
Indicator	Measure
Population	Population size Age composition Gender composition Iwi affiliations Religious affiliations Population growth Births
Family Composition	Household composition Relationship status Family type Dependent children Whānau size Extended families Adoption applications
Cultural and Linguistic Diversity	Ethnic composition Languages spoken Te Reo Māori Place of birth Migration
Disability	Disability rate Disability in private households
Remoteness and Population Density	Rural and urban population Population density

Domain: Promote

Indicator Group: Socioeconomic Environment

Indicator	Measure
Socioeconomic deprivation	Deprivation by NZDep13 Deprivation by Index of Multiple Deprivation (IMD)
Economy	GDP Food Price Index (FPI) Inland Revenue Department (IRD) debt
Income	Household income Family income Personal income Benefit Student loan Superannuation
Employment	Unemployment Employment and labour force Businesses and entities Unpaid work Regional employment forecasts
Education	Early childhood education (ECE) Primary and secondary school education Vocational education Tertiary education Highest qualification
Housing	Dwellings House ownership and tenancy Tenure security Housing and rental affordability Housing suitability Housing maintenance Overcrowding Public, emergency and transitional housing Pensioner and veterans housing
Culture	Whānau Contact with non-resident whānau Whānau support Whānau wellbeing Connection to ancestral marae Marae visits Māori cultural activities Pepeha Acceptance of diversity Ability to express identity

Social connectedness	<ul style="list-style-type: none"> Network access Neighbourhood social connectivity Contact with family and friends Loneliness Discrimination Trust
-----------------------------	---

Indicator Group: Built Environment

Indicator	Measure
Public infrastructure	<ul style="list-style-type: none"> Road network (sealed and unsealed roads) Infrastructure Public transport Neighbourhood quality Access to key public facilities
Quality green public spaces	<ul style="list-style-type: none"> Recreational area visits Historic area visits Conservation areas Camp sites Tramping sites Mountain bike sites Marine reserves Public conservation land

Indicator Group: Community Safety

Indicator	Measure
Crime	<ul style="list-style-type: none"> Fear of crime Safety and security Offences Convictions, orders and sentences Imprisonment
Injuries	<ul style="list-style-type: none"> Intentional injuries Unintentional injuries Trauma Accident Compensation Corporation (ACC) registered injuries Road traffic-related injuries Falls Drug intoxication hospital discharges Adverse medication effects hospital discharges

Domain: Protect

Indicator Group: Climate Change

Indicator	Measure
Temperature	Ambient temperature Maximum temperatures Temperature anomaly Warm days Frosts Sea surface temperature Growing degree days Potential evapotranspiration deficit Sea level
Droughts and Rainfall	Rainfall Sunshine hours Potential evapotranspiration deficit New Zealand Drought Index Physical water stocks
Motorized Vehicles	Driving distance Driving time Motor vehicles Electric vehicles
Health effects of climate change	Infectious diseases Hospitalisations due to extreme temperatures and weather events

Indicator Group: UV Exposure

Indicator	Measure
UV Exposure	UV Index Vitamin D deficiency

Indicator Group: Air

Indicator	Measure
Air Quality	Particulate matter 10 (PM10) Other air pollutants Public perception on air pollution

Indicator Group: Water	
Indicator	Measure
Drinking Water Quality	<ul style="list-style-type: none"> Access to safe drinking water Drinking water standards Drinking water transgressions Drinking water related incidents Community water fluoridation status Groundwater quality
Wastewater	<ul style="list-style-type: none"> Sewage spills
Recreational Water Safety	<ul style="list-style-type: none"> Quality of water in lakes Quality of water in rivers Public perception on quality of freshwater Saltwater quality Public perception on quality of saltwater
Indicator Group: Border Health	
Indicator	Measure
Imported Diseases	<ul style="list-style-type: none"> Notifiable diseases at the border Overseas ship visits
Exotic Mosquitoes	<ul style="list-style-type: none"> Mosquito larvae presence
High Risk Pests	<ul style="list-style-type: none"> Incidents of high-risk pests infestation
Indicator Group: Hazardous Substances	
Indicator	Measure
Chemical	<ul style="list-style-type: none"> Lead poisoning Hazardous Material (HazMat) incidents Methyl bromide fumigations Ionizing radiation incidents
Environmental	<ul style="list-style-type: none"> Asbestos Cooling towers Contaminated land
Vertebrae Toxic Agents (VTA)	<ul style="list-style-type: none"> 1080 drops VTA complaints

Indicator Group: Biotoxins	
Indicator	Measure
Shellfish Biotoxins	Shellfish biotoxin

Indicator Group: Home Health	
Indicator	Measure
Indoor Environment	Smokefree homes Smokefree cars Home environment
Indoor Heating	Home heating Heating fuel

Domain: Prevent

Indicator Group: Modifiable Risk Factors	
Indicator	Measure
Food and drink consumption	Solid food consumption Fast food consumption Sugary drink consumption Breakfast
Sedentary behaviours	Television time Screen watching
Unhealthy weight	Healthy weight Body Mass Index (BMI)
Tobacco Use	Tobacco smoking Attitudes and behaviours towards tobacco smoking Tobacco use by type Smoking cessation
Risky Alcohol Consumption	Heavy episodic drinking Hazardous drinking Adverse alcohol effects
Illicit Drug Use	Cannabis use Amphetamine use Other psychoactive substances Withdrawals Drug rehabilitation admissions Drugs in wastewater

Gambling	Pokie machines Gambling expenditure Gambling helpline Gambling interventions
Abuse and Neglect	Abuse Victimisations Out of home placements Physical punishments Oranga Tamariki notifications Family group conferences
Sun Exposure	Melanoma registrations Non-melanoma registrations

Indicator Group: Protective Factors	
Indicator	Measure
Immunisation	Immunisation status
Healthy Eating	Breastfeeding Fruit and vegetable intake
Physical Activity	Participation in physical activity Time spent on physical activity Physical activity type Attitudes and behaviour towards physical activity Active Transport
Injury Prevention	Seat belt use Bicycle helmets Car speeds
Healthcare Associated Infection Prevention	Antimicrobial usage in hospitals Incidence of staphylococcus bacteraemia in hospitals Multi-resistant healthcare associated infections
Screening	Ultrasound screening Antenatal screening Laboratory tests New-born hearing screening New-born metabolic screening Retinal screening Sexually transmitted infections (STI's) screening Breast screening Cervical screening Prostate screening Preventative screening

Domain: Health Outcomes

Indicator Group: Life Expectancy

Indicator	Measure
Life Expectancy	Life expectancy

Indicator Group: Mortality

Indicator	Measure
Mortality	Perinatal mortality Death rate Causes of death Potentially avoidable deaths

Indicator Group: Quality of Life

Indicator	Measure
Quality of Life	Life satisfaction Family wellbeing Financial wellbeing Health status
Self-reported Health Status	Parent-rated health Self-rated health

Indicator Group: Reproductive Health

Indicator	Measure
Pregnancies	Termination of pregnancies (TOP) Complications during pregnancy
Deliveries	Type of delivery Preterm births Gestational age Birth weight Physical condition of the mother Physical condition of the new-born
Congenital Disorders	Birth defects
Sexually Transmitted Infections (STIs)	STIs

Indicator Group: Preventable chronic conditions	
Indicator	Measure
Prevalence of preventable chronic conditions	<ul style="list-style-type: none"> Cancer incidence and survival rates Prevalence of Cardiovascular Disease (CVD) Prevalence of Chronic Obstructive Pulmonary Disease (COPD) Prevalence of diabetes Prevalence of skin disorders Prevalence of asthma Prevalence of arthritis Prevalence of gout Prevalence of chronic pain Prevalence of hearing impairment Prevalence of dental caries
Mental illness	<ul style="list-style-type: none"> Prevalence of psychological distress Mental health condition (adult) Mental health condition (0-15-year-olds) Mental health condition of older adults

Indicator Group: Communicable Disease	
Indicator	Measure
Vaccine Preventable Diseases (VPDs)	<ul style="list-style-type: none"> VPD notifications VPD hospital admissions VPD outbreaks
Enteric Diseases	<ul style="list-style-type: none"> Enteric disease notifications Enteric disease hospital admissions Enteric disease outbreaks
Other Communicable Diseases	<ul style="list-style-type: none"> Hepatitis B notifications Hepatitis C notifications Human Immunodeficiency Virus (HIV) notifications

Indicator Group: Utilisation of Health Services	
Indicator	Measure
Health care service utilisation	<ul style="list-style-type: none"> LMC registrations Midwifery home visits Primary care enrolments Oral health service enrolments Well Child Tamariki Ora (WCTO) visits Before school checks Oral health service utilisation Mental health admission and community care Free healthcare Private medical insurance

	<ul style="list-style-type: none"> After-hours medical centre visits Practice nurse visits GP visits Prescriptions Older adults in aged residential care Patients with high health needs Access to healthcare services
Patient experience	Patient experience
Hospital admissions	<ul style="list-style-type: none"> Ambulatory Sensitive Hospitalisations (ASH) Emergency Department (ED) presentations Intensive care unit (ICU) Acute medical admissions Outpatient events Hospital discharges

Section 4

Library of measures for the whole population

POPULATION

Measure	Data definition	Data source	Update frequency	Data stratified by	Data available by age
Population					
Population size	Number of usually resident population	Statistics New Zealand	5 years	A, G, E, L	Single ages
Age composition	Number of usually resident population by age	Statistics New Zealand	5 years	A, G, E, L	Single ages
Gender composition	Number of usually resident population by gender	Statistics New Zealand	5 years	A, G, E, L	Single ages
Iwi affiliations	Number of usually resident population by iwi affiliation	Statistics New Zealand	5 years	A, G, L	0-4, 5-9,85+
Religious affiliations	Number of usually resident population by religious affiliation	Statistics New Zealand	5 years	A, G, L	0-4, 5-9,85+
Population growth	Proportion increase in population size each year	Statistics New Zealand	Yearly	A, G, E, L	0-4, 5-9,85+
	Population increase by migration, or a natural increase	Statistics New Zealand	Yearly	L	---
	Number of projected residents every 5 years until 2038	Statistics New Zealand	5 years	A, G, E, L	0-4, 5-9,85+
Births	Number of births per year	Statistics New Zealand	Yearly	L	<20, 20-24,40+
	Demographics of the newborn	Northland District Health Board	Daily	A, G, E, L, D	Birth
	Demographics of mothers giving birth	Northland District Health Board	Daily	A, G, E, L, D	Birth
Family composition					
Household composition	Number of people living in a household	Statistics New Zealand	5 years	L	---
Relationship status	Number of people in each legally registered relationship status	Statistics New Zealand	5 years	L	---
	Number of couples who are opposite sex couples, male couples, and female couples	Statistics New Zealand	5 years	L	---
Family type	Number of same sex couples with children and the number of children	Statistics New Zealand	5 years	A, L	<25, 25-29..... 85+
	Number of opposite sex couples with children and the number of children	Statistics New Zealand	5 years	A, L	<25, 25-29..... 85+
	Number of same sex and opposite sex couples without children	Statistics New Zealand	5 years	A, L	<25, 25-29..... 85+
	Number of single parents	Statistics New Zealand	5 years	L	---
Dependent children	Number of families with dependent children	Statistics New Zealand	5 years	L	---
	Number of families with dependent children and the age of the youngest child	Statistics New Zealand	5 years	A, G, L	0-4, 5-9,15-17
	Number of families by their youngest child's dependency status (under or over 18), in occupied private dwellings	Statistics New Zealand	5 years	A, L	<18, >18
Whānau size	Proportion of Māori respondents by whānau size	Statistics New Zealand	5 years	No stratification	---
Extended families	Number of generations of extended family living in occupied private dwellings	Statistics New Zealand	5 years	L	---
Adoption applications	Number of adoption applications submitted	Ministry of Justice	Yearly	L	---
	Number of adoption applications that have been successful	Ministry of Justice	Yearly	L	---
Cultural and Linguistic Diversity					
Ethnic composition	Number of usually resident population by ethnicity	Statistics New Zealand	5 years	A, G, E, L	0-4, 5-9,85+
Languages spoken	Number of usually resident population by languages spoken	Statistics New Zealand	5 years	A, G, L	0-4, 5-9,85+
Te Reo Māori	Number of Māori who report an ability to speak in Te Reo Māori	Statistics New Zealand	5 years	No stratification	---
	Proportion of Māori respondents who reported speaking Te Reo Māori outside their home	Statistics New Zealand	5 years	No stratification	---
	Proportion of Māori respondents who reported an ability to speak Te Reo Māori	Statistics New Zealand	5 years	No stratification	---
	Proportion of Māori respondents who reported an ability to understand Te Reo Māori	Statistics New Zealand	5 years	No stratification	---
	Proportion of Māori respondents who reported an ability to read Te Reo Māori	Statistics New Zealand	5 years	No stratification	---

Measure	Data definition	Data source	Update frequency	Data stratified by	Data available by age
	Proportion of Māori respondents who reported an ability to write Te Reo Māori	Statistics New Zealand	5 years	No stratification	---
	Proportion of Māori respondents who reported learning Te Reo Māori as their first language	Statistics New Zealand	5 years	No stratification	---
Place of birth	Proportion of the population born in New Zealand	Ministry of Business, Innovation and Employment	Yearly	No stratification	---
	Proportion of usually resident population born in overseas countries	Statistics New Zealand	5 years	G, E, L	---
Migration	Number of approved international student visas	Ministry of Business, Innovation and Employment	Monthly	No stratification	---
	Number of migrants across selected occupations with a job or job offer	Immigration New Zealand	Monthly	No stratification	---
	Number of migrants by source country	Ministry for Business, Innovation and Employment	Yearly	No stratification	---
	Number of incoming and outgoing migrants	Ministry for Business, Innovation and Employment	Monthly	L	---
Disability					
Disability rate	Estimated overall disability rate	Statistics New Zealand	5 yearly	A, DS, L	0-4, 5-9,85+
	Estimated hearing disability rate	Statistics New Zealand	5 yearly	A, DS, L	0-4, 5-9,85+
	Estimated vision disability rate	Statistics New Zealand	5 yearly	A, DS, L	0-4, 5-9,85+
	Estimated physical disability rate	Statistics New Zealand	5 yearly	A, DS, L	0-4, 5-9,85+
	Estimated psychological disability rate	Statistics New Zealand	5 yearly	A, DS, L	0-4, 5-9,85+
	Proportion of under 20-year-olds notified to the New Zealand Deafness Database	New Zealand Audiological Society	Yearly	No stratification	<20
	Number and proportion of older adults who score 0, 1, and 2 on the physical restraints item of the Clinical Assessment Protocol	InterRAI	Yearly	No stratification	Not available
Disability in private households	Proportion of people with hearing impairment	Statistics New Zealand	5 yearly	DS	---
	Proportion of people with seeing impairment	Statistics New Zealand	5 yearly	DS	---
	Proportion of people with mobility impairment	Statistics New Zealand	5 yearly	DS	---
	Proportion of people with agility impairment	Statistics New Zealand	5 yearly	DS	---
	Proportion of people with intellectual impairment	Statistics New Zealand	5 yearly	DS	---
	Proportion of people with psychiatric/psychological impairment	Statistics New Zealand	5 yearly	DS	---
	Proportion of people with speaking impairment	Statistics New Zealand	5 yearly	DS	---
	Proportion of people with learning impairment	Statistics New Zealand	5 yearly	DS	---
	Proportion of people with memory impairment	Statistics New Zealand	5 yearly	DS	---
	Proportion of people with development delays	Statistics New Zealand	5 yearly	DS	---
	Proportion of people with any impairment	Statistics New Zealand	5 yearly	DS	---
Remoteness and Population Density					
Rural and urban population	Geographical units and boundaries for areas which are defined as rural or urban, meshblock boundaries, statistical area unit 1, statistical area unit 2, territorial authority, and region.	Statistics New Zealand	Yearly	L	---
	Number of people living in urban or rural locations	Statistics New Zealand	Yearly	A, G, E, L, D	0-4, 5-9,85+
	Proportion of people living in urban areas	Ministry of Business Innovation and Employment	Yearly	L	---
Population density	Geographical units with approximately 60-120 residents	Statistics New Zealand	5 yearly	L	---
	Geographical units with approximately 100-200, with a maximum of 500 residents	Statistics New Zealand	5 yearly	L	---
	Geographical units with approximately 2,000 to 4,000 for district councils and 1,000 to 3,000 for regional councils	Statistics New Zealand	5 yearly	L	---

PROMOTE

Measure	Data definition	Data source	Update frequency	Data stratified by	Data available by age
Socioeconomic Deprivation					
Deprivation by NZDep13	Mesh blocks and its corresponding NZDep13 Index score	University of Otago	When Census data is updated	L	---
Deprivation by Index of Multiple Deprivation (IMD)	Mesh block and its corresponding IMD score	University of Auckland	One off	L	---
	Minimum, maximum, and median IMD score rankings across the deprivation indices	University of Auckland	One off	L	---
Economy					
GDP	GDP growth	Infometrics	Quarterly	No stratification	---
	GDP growth by industry	Infometrics	Quarterly	No stratification	---
	Proportionate increase in gross domestic product in dollars per capita	Ministry of Business Innovation and Employment	Yearly	L	---
	Gross domestic product in dollars per capita by industry	Ministry of Business Innovation and Employment	Yearly	L	---
	GDP per filled job	Infometrics	Quarterly	No stratification	---
Food Price Index (FPI)	Measure of food price change over time	Statistics New Zealand	Monthly	L	---
Inland Revenue Department (IRD) debt	Overall total sales and income in millions	Inland Revenue Department	Yearly	L	---
	Total GST debt (in millions)	Inland Revenue Department	Yearly	L	---
	Total PAYE debt in millions	Inland Revenue Department	Yearly	L	---
Income					
Household income	Number of households in selected income groups	Statistics New Zealand	5 Years	L	---
	Median household income	Statistics New Zealand	5 Years	L	---
	Number of households in each income source category	Statistics New Zealand	5 Years	L	---
Family income	Number of families in each income group	Statistics New Zealand	5 Years	L	---
	Median family income	Statistics New Zealand	5 Years	L	---
	Number of families in each income source	Statistics New Zealand	5 Years	L	---
Personal income	Median personal income	Statistics New Zealand	Yearly	A, G, E	15-19,...60-64, 65+
	Number of people in each income group	Statistics New Zealand	5 Years	A, G, E, L,	15-24, 25-44, 45-64, 65+
	Number of people who receive income from type of income source	Statistics New Zealand	5 Years	A, G, E, L,	15-24, 25-44, 45-64, 65+
	Mean income	Infometrics	Quarterly	No stratification	---
	Proportion of people in skilled workforce occupations	Infometrics	Quarterly	No stratification	---
	Mean average earnings per quarter	Statistics New Zealand	Quarterly	A, G	15-19,...60-64, 65+
	Medium average earnings per quarter	Statistics New Zealand	Quarterly	A, G	15-19,...60-64, 65+
	Ratio of the mean quarterly income between new employees and continuing employees	Statistics New Zealand	Quarterly	A, G	15-19,...60-64, 65+
	Mean average and medium average earnings per quarter, by sector, size of firm, industry, and new employees versus continuing employees	Statistics New Zealand	Quarterly	No stratification	---
	Ratio of mean quarterly income between new employees a continuing employees by sector, size of firm, and industry	Statistics New Zealand	Quarterly	No stratification	---
Proportion of people receiving rental income	Inland Revenue Department	Yearly	L	---	

Measure	Data definition	Data source	Update frequency	Data stratified by	Data available by age
Benefit	Number of adolescents receiving the youth payment	Ministry of Social Development	By application	Not Available	16 - 17
	Seasonally adjusted proportion of youth not in employment, education, or training (NEET)	Statistics New Zealand	Yearly	A	15-19, 20-24
	Number of adults who receive a benefit	Ministry of Social Development	Quarterly	A, G, E, L	25-39, 40-54, 55-64
	Number of people receiving the jobseekers benefit	Ministry of Social Development	Quarterly	A, G, DS, E, L	18-24, 25-39, 40-54, 55-64
	Number of people receiving the sole parents benefit	Ministry of Social Development	Quarterly	A, G, E, L	18-24, 25-39, 40-54, 55-64
	Number of people receiving the supported living benefit	Ministry of Social Development	Quarterly	A, G, DS, E, L	18-24, 25-39, 40-54, 55-64
	Number of people receiving benefit sanctions	Ministry of Social Development	Quarterly	No Stratification	---
	Number of people receiving the supplementary benefit	Ministry of Social Development	Quarterly	No Stratification	---
	Number of people receiving hardship assistance grants	Ministry of Social Development	Quarterly	No Stratification	---
Student loan	Number of student loan holders	Inland Revenue Department	Yearly	No stratification	---
	Number of student loan holders who are business individuals or non- individuals	Inland Revenue Department	Yearly	A	16-24, 25-44, 45-64, 65+
	Proportion of individuals not registered for GST or PAYE registered, business individuals, non-business individuals on the student loan scheme	Inland Revenue Department	Yearly	L	---
	Total student loan scheme debt	Inland Revenue Department	Quarterly	No stratification	---
Superannuation	Number of superannuation recipients	Ministry of Social Development	Quarterly	No Stratification	65+
Employment					
Unemployment	Proportion of labour force who are unemployed	Statistics New Zealand	Quarterly	A, G, E	15-24, 25-54, 55+
	Number of people working part-time that would like to increase their hours	Statistics New Zealand	Quarterly	G	---
	Proportion of underutilised people relative to the extended labour force	Ministry of Business Innovation and Employment	Yearly	L	---
Employment and labour force	Number of people in labour force by status	Statistics New Zealand	5 years	L	---
	Number of people in employment by type of industry	Statistics New Zealand	5 years	A, G, E, L	15-19, 20-24, 25-29, ..., 60-64
	Number of filled jobs	Infometrics	Quarterly	No stratification	---
	Number of worker accessions	Statistics New Zealand	Quarterly	A, G	15-19,...60-64, 65+
	Number of worker separations	Statistics New Zealand	Quarterly	A, G	15-19,...60-64, 65+
	Worker turnover rate	Statistics New Zealand	Quarterly	A, G	15-19,...60-64, 65+
	Staff annual average quarterly turnover rate	Ministry of Business Innovation and Employment	Yearly	L	---
	Number of jobs listed online on websites	Ministry of Business Innovation and Employment	Monthly	No stratification	---
	Proportion of individuals not registered for GST or PAYE who are self-employed	Inland Revenue Department	Yearly	No stratification	---
	Proportion of individuals not registered for GST or PAYE who are self-employed and do not employ others	Inland Revenue Department	Yearly	No stratification	---
	Proportion of individuals not registered for GST or PAYE who are self-employed and employ others	Inland Revenue Department	Yearly	No stratification	---
	Proportion of individuals not registered for GST or PAYE who are wage or salary earners	Inland Revenue Department	Yearly	No stratification	---
	Proportion of individuals not registered for GST or PAYE, business individuals, non-business individuals who are registered for family tax credits	Inland Revenue Department	Yearly	No stratification	---
Proportion of individuals not registered for GST or PAYE, business individuals, non-business individuals who are registered for child support by liable parent or receiving	Inland Revenue Department	Yearly	No stratification	---	

Measure	Data definition	Data source	Update frequency	Data stratified by	Data available by age
	parent.				
	Number of individuals registered with IRD	Inland Revenue Department	Yearly	No stratification	---
	Number of business individuals registered with IRD	Inland Revenue Department	Yearly	No stratification	---
	Number of non-business individuals registered with IRD	Inland Revenue Department	Yearly	No stratification	---
	Number of entities registered with IRD	Inland Revenue Department	Yearly	No stratification	---
	Number of businesses registered with IRD	Inland Revenue Department	Yearly	No stratification	---
	Number of IRD customers who are GST registered	Inland Revenue Department	Yearly	No stratification	---
	Number of active tax payers including individuals and entities	Inland Revenue Department	Yearly	No stratification	---
Businesses and entities	Number of registered tax payers including individuals and entities	Inland Revenue Department	Yearly	No stratification	---
	Number of business units	Infometrics	Quarterly	No stratification	---
	Proportion of businesses that are in the primary industry, secondary industry, tertiary industry, quaternary industry, companies, business individuals, Māori authorities, partnerships, societies or clubs or trusts	Inland Revenue Department	Yearly	No stratification	---
	Proportion of business that are aged <2, 2- 5, 6- 9, or ten years and over	Inland Revenue Department	Yearly	No stratification	---
	Proportion of entities that are companies, Māori authorities, partnerships, societies, or trusts.	Inland Revenue Department	Yearly	No stratification	---
Unpaid work	List of current infrastructure changes in the pipeline	New Zealand Treasury	Quarterly	No stratification	---
	Number of unpaid people caring for an ill person(s) in their household	Statistics New Zealand	5 years	L	---
	Number of unpaid people caring for an ill person(s) outside their household	Statistics New Zealand	5 years	L	---
	Number of unpaid people completing unpaid household duties	Statistics New Zealand	5 years	L	---
	Number of unpaid people in voluntary work for an organisation or marae	Statistics New Zealand	5 years	L	---
	Number of unpaid people looking after a child(ren) in their household	Statistics New Zealand	5 years	L	---
Regional employment forecasts	Number of unpaid people looking after a child(ren) outside their household	Statistics New Zealand	5 years	L	---
	Number of people forecasted to be employed within three years	Ministry of Business Innovation and Employment	Yearly	No stratification	---
Education					
Early childhood education (ECE)	Number of early childhood education services	Education Counts	Yearly	L, D	---
	Number of enrolments in kohanga reo	Education counts	Yearly	A, G, E, L, D	Single ages
	Number of enrolments in early childhood education	Education counts	Yearly	A, G, E, L, D	Single ages
	Amount of expenditure by early childhood education entities on children entitled to funding	Education Counts	Yearly	L	---
	Number of early childhood education services that provide information about language use at their schools	Education Counts	Yearly	L, D	---
	Number of early childhood education teaching staff	Education Counts	Yearly	L, D	---
	Number of early childhood education services that meet policy for lighting, ventilation, temperature, noise, hygiene, water, nutrition, food storage, water temperature, changing facilities, bathing, communicable diseases, sleeping areas, safe, hygienic, and maintained equipment, fresh linen, safe floor surfaces and are compliant.	Public Health Units	By assessment	L	---
Primary and secondary school education	Number of schools	Education Counts	Yearly	L, D	---
	Number of students enrolled at school	Education counts	Yearly	A, G, E, L, D	Single ages
	Number of Māori enrolled in kura kaupapa	Education Counts	Yearly	A, E, L, D	Single ages
	Number of students enrolled in Māori medium education	Education Counts	Yearly	A, E, L, D	Single ages
	Number of primary school students learning languages other than English and Te Reo Māori	Education counts	Yearly	L, D	5-12

Measure	Data definition	Data source	Update frequency	Data stratified by	Data available by age
	Number of secondary school students learning languages other than English and Te Reo Māori	Education counts	Yearly	L, D	12-18
	Number and proportion of students who obtained manawa ora or manawa toa for korero, literacy, numeracy, and writing in primary school	Education Counts	Yearly	L	5-12
	Rate and age standardized rate per 1,000 student stand downs, suspensions, and exclusions	Education counts	Yearly	A, G, E, L	5-9, 10-14, 15+
	Rate and age standardized rate per 1,000 student expulsions	Education counts	Yearly	G, E, L	5-18
	Number of students who moved school twice or more during March to November in the year	Education counts	Yearly	L	5-18
	Proportion of students that attend less than 70% of half days at school	Education counts	Yearly	No stratification	5-18
	Proportion of students attending more than 90% of half days at school	Education counts	Yearly	No stratification	5-18
	Proportion of class time missed due to unjustified absences	Education counts	Yearly	No stratification	5-18
	Proportion of class time missed due to justified absences	Education counts	Yearly	No stratification	5-18
	Number and proportion of students attaining at or above the national standard for mathematics in primary school	Education counts	Yearly	G, E, L	5-12
	Number and proportion of students attaining at or above the national standard for reading in primary school	Education counts	Yearly	G, E, L	5-12
	Number of students enrolled by secondary subjects	Education counts	Yearly	G, A, L, D	Single school years
	Proportion of students staying at school until age 17	Education counts	Yearly	A, G, E, L	<17, >17
	Number of students who left school by age	Education counts	Yearly	G, A, E, L, D	Single ages
	Rate per 1,000 students with early leaving exemptions	Education counts	Yearly	G, E, L	15
	Number of students with little or no formal educational attainment	Education Counts	Yearly	G, A, E, L, D	Single ages
	Number of students with university entrance standard attainments	Education Counts	Yearly	G, A, E, L, D	Single ages
	Proportion of school leavers with a vocational pathway award	Education counts	Yearly	G, E, L	School leavers
	Number of school leavers with the highest qualification level at secondary school	Education Counts	Yearly	G, A, E, L, D	Single ages
	Number of children with the highest qualification by qualification levels	Statistics New Zealand	5 years	G, A, E, L	15-19
	Amount of government expenditure on school operations, teacher salaries, and property funding	Education Counts	Yearly	L	---
	Number and proportion of schools that have a fair representation of Māori Board of Trustees (BoT) members	Education Counts	Yearly	L	---
	Number of children who are home-schooled	Education Counts	Yearly	G, A, E, L	Single ages
Vocational education	Number of adults enrolled in vocational education programmes	Education Counts	Yearly	G, A, E	<18, 18-19, 20-24, 25-39, 40+
	Number of industry trainees by industry, occupation, and field of study	Education counts	Yearly	G, A, E	<18, 18-19, 20-24, 25-39, 40+
	Number of people who completed qualifications in vocational education programmes	Education Counts	Yearly	No stratification	---
	Number of apprenticeships by industry, occupation, and field of study	Education Counts	Yearly	No stratification	---
Tertiary education	Proportion of adults who enrol with a tertiary provider by type of tertiary provider	Education counts	Yearly	G, A, E	<18, 18-19, 20-24, 25-39, 40+
	Number of school leavers who enrol in tertiary studies within one year after leaving school	Education Counts	Yearly	No stratification	School leavers
	Number of students who completed qualifications at tertiary level by provider, level of qualification, domestic or international, field of study	Education Counts	Yearly	G, A, E	<18, 18-19, 20-24, 25-39, 40+
Highest qualification	Number of usual residents with the highest qualification by qualification levels	Statistics New Zealand	5 years	G, A, E, L	15-19, 20-24,65+

Housing

Measure	Data definition	Data source	Update frequency	Data stratified by	Data available by age
Dwellings	Number of occupied private dwellings	Statistics New Zealand	5 yearly	L	---
	Number of occupied non-private dwellings	Statistics New Zealand	5 yearly	L	---
	Number of unoccupied dwellings with residents away	Statistics New Zealand	5 yearly	L	---
	Number of empty dwellings	Statistics New Zealand	5 yearly	L	---
	Number of dwellings by number of bedrooms	Statistics New Zealand	5 yearly	L	---
	Number of dwellings under construction	Statistics New Zealand	5 yearly	L	---
	Number of building consents issued	Statistics New Zealand	Monthly	L	---
	Number of residential building consents issued	Statistics New Zealand	Monthly	L	---
	Number of non-residential building consents issued	Statistics New Zealand	Monthly	L	---
	Value of building consents issued	Statistics New Zealand	Monthly	L	---
	Value of residential building consents issued	Statistics New Zealand	Monthly	L	---
	Value of non-residential building consents issued	Statistics New Zealand	Monthly	L	---
House ownership and tenancy	Number of landlords by each landlord sector	Statistics New Zealand	5 years	L	---
	Number of people by housing tenure status	Statistics New Zealand	5 yearly	G, A, E, L	15-19, 20-24, ... , 85+
	Number and proportion of property transfers	Statistics New Zealand	Quarterly	L	---
Tenure security	Proportion of respondents who reported the length of time spent living in the house or flat by selected time intervals	Statistics New Zealand	Yearly	No stratification	---
	Proportion of respondents who reported the number of times they have moved in the past five years	Statistics New Zealand	Yearly	No stratification	---
	Proportion of respondents who reported their reasons for moving for renters and house owners	Statistics New Zealand	Yearly	No stratification	---
Housing and rental affordability	Median price of houses	Real Estate Institute of New Zealand	Monthly	No stratification	---
	Mean rent of a private property	Ministry of Business Innovation and Employment	Monthly	L	---
	Median rent expenditure per week	Statistics New Zealand	5 years	L	---
	Number of people paying rent by rent cost categories	Statistics New Zealand	5 years	L	---
	Household income after housing costs for renters and potential first home buyers	Ministry of Business Innovation and Employment	Quarterly	L	---
Housing suitability	Proportion of respondents agreement on a likert scale for housing suitability	Statistics New Zealand	Yearly	No stratification	---
	Proportion of respondents agreement on a likert scale for the suitability of the location of their home	Statistics New Zealand	Yearly	No stratification	---
	Proportion of respondents who reported having outdoor area by type	Statistics New Zealand	Yearly	No stratification	---
Housing maintenance	Proportion of respondents who reported the need for repairs in their house	Statistics New Zealand	Yearly	No stratification	---
	Proportion of respondents who reported reasons for not repairing the house, for renters or house owners	Statistics New Zealand	Yearly	No stratification	---
	Proportion of respondents who reported their housing affordability on a scale from one to 10	Statistics New Zealand	Yearly	No stratification	---
Overcrowding	Number of usually resident population by number of bedrooms in the house	Statistics New Zealand	5 yearly	L	---
	Number of households that need one extra bedroom	Statistics New Zealand	5 yearly	E, L	---
	Number of households that need two or more extra bedrooms	Statistics New Zealand	5 yearly	E, L	---
Public, emergency, and transitional housing	Number of public houses	Ministry of Social Development	Quarterly	No stratification	---
	Number of people who are eligible for social housing who are on the waiting list	Ministry of Social Development	Quarterly	No stratification	---
	Number of households ready to transfer to another social housing home	Ministry of Social Development	Quarterly	No stratification	---

Measure	Data definition	Data source	Update frequency	Data stratified by	Data available by age
	Number of public housing tenancies	Ministry of Social Development	Quarterly	L	---
	Number of emergency housing applications approved	Ministry of Social Development	Quarterly	L	---
	Value of emergency housing approved	Ministry of Social Development	Quarterly	L	---
	Number of transitional housing places available	Ministry of Social Development	Quarterly	L	---
Pensioner and veterans housing	A list of pensioner housing	Far North, Kaipara and Whangarei District Councils	By change made	L	---
Culture					
Whānau	Proportion of Māori respondents who included social groups (parents, partners children, brother and sisters, aunties, uncles, cousins, nephews, nieces, other in laws, grandparents, grandchildren, friends and others) as part of their whānau	Statistics New Zealand	5 years	No stratification	---
	Proportion of Māori respondents reporting quality of whānau relationships	Statistics New Zealand	5 years	No stratification	---
Contact with non-resident whānau	Proportion of Māori respondents who reported face to face contact in selected time periods	Statistics New Zealand	5 years	No stratification	---
	Proportion of Māori respondents who reported non face-to-face contact within specific time periods	Statistics New Zealand	5 years	No stratification	---
	Proportion of Māori respondents who reported satisfaction with whānau contact	Statistics New Zealand	5 years	No stratification	---
Whānau support	Proportion of Māori respondents who reported an ease to access general support from whānau	Statistics New Zealand	5 years	No stratification	---
	Proportion of Māori respondents who reported an ease to access support in times of need from whānau	Statistics New Zealand	5 years	No stratification	---
	Proportion of Māori respondents who reported an ease to access support with Māori cultural practice from whānau	Statistics New Zealand	5 years	No stratification	---
Whānau wellbeing	Proportion of Māori respondents who reported their whānau is doing well	Statistics New Zealand	5 years	No stratification	---
	Proportion of Māori respondents who reported that their whānau is getting better or worse	Statistics New Zealand	5 years	No stratification	---
Connection to ancestral marae	Proportion of Māori respondents who agreed towards being connected to their marae as turangawaiwai	Statistics New Zealand	5 years	No stratification	---
Marae visits	Proportion of Māori respondents who have been to a Marae	Statistics New Zealand	5 years	No stratification	---
	Proportion of Māori respondents who have been to a Marae in the last 12 months	Statistics New Zealand	5 years	No stratification	---
	Proportion of Māori respondents who have been to their ancestral Marae	Statistics New Zealand	5 years	No stratification	---
	Proportion of Māori respondents who have been to their ancestral Marae in the last 12 months	Statistics New Zealand	5 years	No stratification	---
Māori cultural activities	Proportion of Māori respondents who reported using a Māori greeting in the last 12 months	Statistics New Zealand	5 years	No stratification	---
	Proportion of Māori respondents who reported wearing Māori jewellery in the last 12 months	Statistics New Zealand	5 years	No stratification	---
	Proportion of Māori respondents who reported wearing Māori branded clothing in the last 12 months	Statistics New Zealand	5 years	No stratification	---
	Proportion of Māori respondents who reported having contact with Māori through social media in the last 12 months	Statistics New Zealand	5 years	No stratification	---
	Proportion of Māori respondents who reported going to a Māori cultural event or festival in the last 12 months	Statistics New Zealand	5 years	No stratification	---
	Proportion of Māori respondents who reported cultural practice singing a waiata/gave a mihi/took part in Māori cultural arts and crafts in the last 12 months	Statistics New Zealand	5 years	No stratification	---
	Proportion of Māori respondents who reported going to a hui, taking part in traditional Māori healing/massage in the last 12 months	Statistics New Zealand	5 years	No stratification	---
	Proportion of Māori respondents who reported discussing whakapapa or family history in the last 12 months	Statistics New Zealand	5 years	No stratification	---

Measure	Data definition	Data source	Update frequency	Data stratified by	Data available by age
	Proportion of Māori respondents who reported learning culture at a library, museum, or Māori website in the last 12 months	Statistics New Zealand	5 years	No stratification	---
	Proportion of Māori respondents who reported watching a Māori television program in the last 12 months	Statistics New Zealand	5 years	No stratification	---
	Proportion of Māori respondents who reported listening to a Māori radio station in the last 12 months	Statistics New Zealand	5 years	No stratification	---
	Proportion of Māori respondents who reported reading a Māori magazine in the last 12 months	Statistics New Zealand	5 years	No stratification	---
	Proportion of Māori respondents who reported teaching or sharing Māori language with others in the last 12 months	Statistics New Zealand	5 years	No stratification	---
	Proportion of Māori respondents who reported doing something that involved learning the Māori culture or language in the last 12 months	Statistics New Zealand	5 years	No stratification	---
	Proportion of Māori respondents who reported being involved in any other Māori culture practice in the last 12 months	Statistics New Zealand	5 years	No stratification	---
	Proportion of Māori respondents who reported cultural practice having a ta moko in the last 12 months	Statistics New Zealand	5 years	No stratification	---
Pepeha	Proportion of Māori respondents who know their Iwi, Hapu, Maunga, Awa, Waka, Tupuna, and ancestral marae	Statistics New Zealand	5 years	No stratification	---
	Proportion of Māori respondents who do not know any elements of their pepeha	Statistics New Zealand	5 years	No stratification	---
	Proportion of Māori respondents who know all elements of their pepeha	Statistics New Zealand	5 years	No stratification	---
Acceptance of diversity	Proportion of respondents who reported being comfortable or very comfortable with a new neighbour who was a different religion to the respondent	Statistics New Zealand	Yearly	No stratification	---
	Proportion of respondents who reported being comfortable or very comfortable with a new neighbour who was different sexual orientation to the respondent	Statistics New Zealand	Yearly	No stratification	---
	Proportion of respondents who reported being comfortable or very comfortable with a new neighbour who was a different ethnicity to the respondent	Statistics New Zealand	Yearly	No stratification	---
	Proportion of respondents who reported being comfortable or very comfortable with a new neighbour who had a mental illness	Statistics New Zealand	Yearly	No stratification	---
	Proportion of respondents who reported being comfortable or very comfortable with a new neighbour who used a different language to the respondent	Statistics New Zealand	Yearly	No stratification	---
	Proportion of respondents who reported being comfortable or very comfortable with a new neighbour who had a disability or long term health condition	Statistics New Zealand	Yearly	No stratification	---
Ability to express identity	Proportion of respondents who reported easy or very easy to express identity	Statistics New Zealand	Yearly	No stratification	---
Social connectedness					
Network access	Number of people with access to cell phones, telephones, fax machines, and internet	Statistics New Zealand	5 years	L	---
Neighbourhood social connectivity	Proportion of respondents who reported their sense of social connectivity with people in their neighbourhood on a scale from one to 10	Statistics New Zealand	Yearly	No stratification	---
Contact with family and friends	Proportion of respondents who reported having face to face contact with family at least once per week	Statistics New Zealand	Yearly	No stratification	---
	Proportion of respondents who reported having non-face to face contact with family at least once per week	Statistics New Zealand	Yearly	No stratification	---
	Proportion of respondents who reported having face to face contact with friends at least once per week	Statistics New Zealand	Yearly	No stratification	---
	Proportion of respondents who reported having non-face to face contact with friends at least once per week	Statistics New Zealand	Yearly	No stratification	---
Loneliness	Proportion of respondents who report degrees of loneliness on a likert scale	Statistics New Zealand	2 years	No stratification	---
	Proportion of Māori respondents who reported degrees of loneliness in the last four weeks	Statistics New Zealand	5 years	No stratification	---

Measure	Data definition	Data source	Update frequency	Data stratified by	Data available by age
Discrimination	Proportion of respondents who reported that they experienced discrimination in the last 12 months	Statistics New Zealand	Yearly	No stratification	---
Trust	Proportion of respondents who reported being able to trust people in New Zealand	Statistics New Zealand	Yearly	No stratification	---
	Proportion of respondents who reported being able to trust the courts	Statistics New Zealand	Yearly	No stratification	---
	Proportion of respondents who reported being able to trust the education system	Statistics New Zealand	Yearly	No stratification	---
	Proportion of respondents who reported being able to trust the health system	Statistics New Zealand	Yearly	No stratification	---
	Proportion of respondents who reported being able to trust the media	Statistics New Zealand	Yearly	No stratification	---
	Proportion of respondents who reported being able to trust parliament	Statistics New Zealand	Yearly	No stratification	---
	Proportion of respondents who reported being able to trust the police	Statistics New Zealand	Yearly	No stratification	---
Public infrastructure					
Road network (sealed and unsealed roads)	New Zealand road network	New Zealand Transport Agency	By new or changed road network	L	---
Infrastructure	List and location of all hospitals, after-hours medical emergency centres, general practices, Māori health providers, pharmacies, allied health services and other health providers	Northland District Health Board, Mahitahi Hauora - Primary Healthcare Entity, Māori health providers, other private health practitioners	By existing, new or disestablished centres	L	---
	Location of all fire stations	Northland Regional Council	By new or disestablished fire station	L	---
	Location of all police stations	New Zealand Police	By new or disestablished police station	L	---
	List and location of all Early Childhood Centres (ECE's) including Kohanga Reo, schools including Kura's, tertiary education providers and vocational training centres.	New Zealand Qualifications Authority (NZQA)	---	L	---
	List and location of all marae, parks, playgrounds, walkways, cycle tracks, cycle ways, public swimming pools, public toilets, breastfeeding public spaces, sport clubs, sports grounds, cooling towers, sunbed outlets, hairdressers, brothels, massage parlours, mines, and industries dealing with hazardous substances	Northland Regional Council	By new or disestablished park	L	---
	List and location of all libraries	Department of Internal Affairs	By new or disestablished library	L	---
	List of gambling venues	Department of Internal Affairs	3 Monthly	L	---
	List and location of all active liquor licences (including on-, off- and club licences)	Ministry of Justice	By new or removed licence	L	---
	Map and list of liquor ban areas	Far North, Kaipara and Whangarei District Councils and Northland Regional Council	By new or disestablished liquor ban	L	---
	List and location of all active tobacco, e-cigarette and vaping retail outlets.	Public Health Units	3 monthly	L	---
	List of all supermarket outlets, convenience store outlets, takeaway outlets, fast food takeaway outlets, and dine-in restaurant outlets.	Northland Regional Council	By new or disestablished outlet	L	---
	List of resource consents granted for infrastructure by resource consent categories	Far North, Kaipara and Whangarei District Councils	By resource consent	L	---
	List of resource consent applications	Far North, Kaipara and Whangarei District Councils and Northland Regional Council	By resource consent	L	---

Measure	Data definition	Data source	Update frequency	Data stratified by	Data available by age
Public transport	List of regional bus service providers	Northland Regional Council	By new or disestablished bus service	No stratification	---
	List of local bus service routes and times	Far North, Kaipara and Whangarei District Councils	By new or disestablished bus service	No stratification	---
	Number of public bus tickets for gold card holders	Northland Regional Council	By ticket	No stratification	---
Neighbourhood quality	Proportion of respondents who reported the attractiveness of their neighbourhood from one to 10	Statistics New Zealand	Yearly	No stratification	---
Access to key public facilities	Proportion of respondents who reported the ease of getting to the nearest supermarket or dairy	Statistics New Zealand	Yearly	No stratification	---
	Proportion of respondents who reported their main reason of difficulty for not being able to access the nearest supermarket or dairy	Statistics New Zealand	Yearly	No stratification	---
	Proportion of respondents who reported the ease of accessing their nearest doctor	Statistics New Zealand	Yearly	No stratification	---
	Proportion of respondents who reported their main reason for not being able to access their nearest doctor	Statistics New Zealand	Yearly	No stratification	---
	Proportion of respondents who reported the ease of accessing public transport	Statistics New Zealand	Yearly	No stratification	---
	Proportion of respondents who reported their main reason for not being able to access public transport	Statistics New Zealand	Yearly	No stratification	---
Quality green public spaces					
Recreational area visits	Proportion of respondents who visited Department of Conservation recreational areas	Department of Conservation	Yearly	No stratification	---
Historic area visits	Proportion of respondents who visited Department of Conservation historical areas	Department of Conservation	Yearly	No stratification	---
Conservation areas	Number of visitors to Department of Conservation sites	Department of Conservation	Current	L	---
Camp sites	List of all Department of Conservation camp sites	Department of Conservation	Current	L	---
Tramping sites	List of all Department of Conservation tramping sites	Department of Conservation	Current	L	---
Mountain bike sites	List of all Department of Conservation mountain bike sites	Department of Conservation	Current	L	---
Marine reserves	List of all Department of Conservation marine reservation sites	Department of Conservation	Current	L	---
Public conservation land	List of all Department of Conservation public conservation land	Department of Conservation	Current	L	---
Crime					
Fear of crime	Proportion of respondents who reported their fear of crimes effect on life on a scale from one to 10	Statistics New Zealand	Yearly	No stratification	---
Safety and security	Proportion of respondents who reported feeling safe or very safe when walking alone in the neighbourhood after dark	Statistics New Zealand	Yearly	No stratification	---
	Proportion of respondents who reported feeling safe or very safe when home by themselves at night	Statistics New Zealand	Yearly	No stratification	---
	Proportion of respondents who reported feeling safe or very safe when using waiting for public transport at night	Statistics New Zealand	Yearly	No stratification	---
	Proportion of respondents who reported feeling safe or very safe when using the internet for online transactions	Statistics New Zealand	Yearly	No stratification	---
Offences	Number of offences by offence type	New Zealand Police	Monthly	G, A, E, L	5-9,10-14,....80+
	Rate of child offences per 10,000 population	Ministry of Justice	Yearly	No stratification	10-13
	Number of children and adolescents referred for youth justice with a prior child protection report of concern	Ministry of Justice	Yearly	A	10-13, 14-16
	Proportion of child offenders who had no proceedings two years prior	Ministry of Justice	Yearly	A	10-13, 14-16

Measure	Data definition	Data source	Update frequency	Data stratified by	Data available by age
	Number and proportion of child reoffenders within one year	Ministry of Justice	Yearly	A	14 – 16, 16
	Number and proportion of child reoffenders within two years	Ministry of Justice	Yearly	A	14 – 16, 16
	Number of family violence investigations	New Zealand Family Violence Clearinghouse	Yearly	No stratification	---
Convictions, orders and sentences	Number and rate of proceedings against children per 10,000 population	Ministry of Justice	Yearly	A	10-13, 14-16
	Number of children and young people whose charges were finalised in a court, by charge outcome	Ministry of Justice	Yearly	L	12-16
	Number of children and young people whose charges were finalised in youth court, by charge outcome	Ministry of Justice	Yearly	L	10-16
	Number of offenders whose offending was serious enough to lead to a family group conference or court action	Ministry of Justice	Yearly	A	10-13, 14-16
	Number of people convicted in court by offence	Statistics New Zealand	Yearly	G, A, E	17-19, 20-24, 25-29, 30-39, 40+
	Number of family violence convictions by offence type and most serious sentence	Ministry of Justice	Yearly	L	---
	Number of people charged with drug offences by charge outcome	Ministry of Justice	Yearly	L	---
	Number of people charged with psychoactive substances offences by charge outcome	Ministry of Justice	Yearly	L	---
	Number of family violence charges by offence type and charge outcome	Ministry of Justice	Yearly	L	---
	Number of sexual offence charges by charge outcome	Ministry of Justice	Yearly	L	---
	Number of people charged with harmful digital communications offences with charge outcome	Ministry of Justice	Yearly	L	---
	Proportion of youth under custody of the chief executive of Oranga Tamariki who appear in the youth court	Ministry of Justice	Yearly	No stratification	12-16
	Number of adults convicted in court by sentence type	Statistics New Zealand	Yearly	G, A, E	17-19, 20-24, 25-29, 30-39, 40+
	Number of police safety orders	New Zealand Family Violence Clearinghouse	Yearly	L	---
	Number of protection orders by application type	Ministry of Justice	Yearly	L	---
	Number of cannabis charges by charge outcome	Ministry of Justice	Yearly	L	---
	Number of methamphetamine charges by charge outcome	Ministry of Justice	Yearly	L	---
	Number of people driving under the influence who were charged by charge outcome	Ministry of Justice	Yearly	L	---
	Number of charges by charge outcome	Ministry of Justice	Yearly	L	---
	Number of people who received their first strike	Ministry of Justice	Yearly	L	---
	Number of people who received their third strike	Ministry of Justice	Yearly	L	---
Number of community based sentences	Corrections Department New Zealand	Quarterly	No stratification	---	
Number of discharges without conviction	Ministry of Justice	Yearly	L	---	
Number of alcohol interlock orders	Ministry of Justice	Yearly	L	---	
Imprisonment	Number of people residing in prison	Corrections Department New Zealand	Quarterly	No stratification	---
	Number of people in remand imprisonment	Corrections Department New Zealand	Quarterly	No stratification	---
	Number of contraband confiscated by contraband type	Corrections Department New Zealand	Yearly	No stratification	---
	Number of serious assaults on staff in prison	Corrections Department New Zealand	Yearly	No stratification	---
	Number of serious assaults on an inmate in prison	Corrections Department New Zealand	Yearly	No stratification	---

Measure	Data definition	Data source	Update frequency	Data stratified by	Data available by age
		Zealand			
	Number of natural prison deaths	Corrections Department New Zealand	Yearly	No stratification	---
	Number of unnatural prison deaths	Corrections Department New Zealand	Yearly	No stratification	---
	Number of prison escapes	Corrections Department New Zealand	Yearly	No stratification	---
Injuries					
Intentional injuries	Number of hospital discharges from self-harm	Ministry of Health	21 days	G, A, E, L, D, DS	Single ages
	Number of unsuccessful suicide attempts that led to hospital admission	Ministry of Health	21 days	G, A, E, L, D, DS	Single ages
	Rate per 100,000 population and number of hospital discharges from self-inflicted injuries	University of Otago	Yearly	A, G, E, L	0-4, 5-9,85+
Unintentional injuries	Rate per 100,000 population and number of hospital discharges from unintentional injuries	University of Otago	Yearly	A, G, E, L	0-4, 5-9,85+
Trauma	Count and rate per 1,000 admissions due to physical injury	Health Quality and Safety Commission	Yearly	G, A, E, L	0-14, 15-24, 25-44, 45-64, 65+
	Number of admissions to the major trauma unit	Health Quality and Safety Commission	Yearly	G, A, E, L	0-14, 15-24, 25-44, 45-64, 65+
	Proportion of people admitted for a major injury prior to a given time period	Health Quality and Safety Commission	Yearly	No stratification	---
Accident Compensation Corporation (ACC) registered injuries	Number of ACC claims	Accident Compensation Corporation	By claim	Not available	---
	The top five most common ACC injuries	Accident Compensation Corporation	By accident	G, A, E, L, DS	Single ages
	Number of ACC work-related injury claims by industry	Statistics New Zealand	Yearly	G, A, L	15 -24, 65-74, 75+
	Cost of alcohol-related ACC claims	Accident Compensation Corporation	By claim	Not available	---
Road traffic-related injuries	Rate per 100,000 population of road traffic-related injuries	University of Otago	Yearly	A, G, E, L	0-4, 5-9,85+
	Number of hospital discharges from road traffic-related accidents	University of Otago	Yearly	A, G, E, L	0-4, 5-9,85+
	Number of non-fatal road traffic-related accidents by road conditions at the time of accident	Ministry of Transport	By crash	A, G, E, L	Single ages
	Number of accidents by people with blood alcohol levels great than 120mg/100ml	Ministry of Transport	By crash	A, G, E, L	Single ages
	Number of crashes with a previous alcohol conviction	Ministry of Transport	By crash	A, G, E, L	Single ages
Falls	Number of hospital discharges for falls	University of Otago	Yearly	A, G, E, L	0-4, 5-9,85+
	Number of people admitted with a fall with at least one overnight stay in hospital	Health Quality and Safety Commission	Yearly	G, A, E	50-64, 65-74,75-84, 85+
	Number of people who fractured their neck as a result of a fall	Health Quality and Safety Commission	Yearly	G, A, E	50-64, 65-74,75-84, 85+
	Number of people with one or more hospital admissions due to a fall	Health Quality and Safety Commission	Yearly	G, A, E	50-64, 65-74,75-84, 85+
	Number of older adults who score 0, 1, and 2 on the falls item of the Clinical Assessment Protocol	InterRAI	Yearly	No stratification	Not available
	Proportion of older adults who score 0, 1, and 2 on the falls item of the Clinical Assessment Protocol	InterRAI	Yearly	No stratification	Not available
Drug intoxication hospital discharges	Rate per 100,000 population and number of hospital discharges from drug intoxication	University of Otago	Yearly	A, G, E, L	0-4, 5-9,85+
Adverse medication effects hospital	Rate per 100,000 population and number of adverse medication effects hospital discharges	University of Otago	Yearly	A, G, E, L	0-4, 5-9,85+

Measure	Data definition	Data source	Update frequency	Data stratified by	Data available by age
discharges					

PROTECT

Measure	Data definition	Data source	Update frequency	Data stratified by	Data available by age
Temperature					
Ambient temperature	Mean temperature in degrees Celsius each month	National Institute of Water and Atmospheric Research	Unknown	L	---
Maximum temperatures	Maximum temperature in degrees Celsius each day	National Institute of Water and Atmospheric Research	Unknown	L	---
Seasonal Rainfall	Seasonal rainfall by season	Ministry for the Environment	Yearly	L	---
Temperature anomaly	Average annual mean temperature above or below the 29 year average	Ministry for the Environment	Yearly	L	---
Warm days	Number of days with a maximum temperature above 25 degrees	Ministry for the Environment	Yearly	L	---
Frosts	Number of days with a minimum below 0 degrees	Ministry for the Environment	Yearly	L	---
	Number of frost days per month	Ministry for the Environment	Monthly	L	---
Sea surface temperature	Mean coastal sea surface temperature in degrees Celsius each year	Ministry for the Environment	Yearly	L	---
Growing degree days	Number of degrees (in Celsius) above the threshold of 10 degrees over a year	Ministry for the Environment	Yearly	L	---
Potential evapotranspiration deficit	Annual average potential evapotranspiration deficit in mm	Ministry for the Environment	Quarterly	L	---
Sea level	Height above datum in meters	Land Information New Zealand	Daily	L	---
Droughts and Rainfall					
Rainfall	Proportion of annual precipitation greater than the 95 percentile	Ministry for the Environment	Yearly	L	---
	Total mm of rain per day	Ministry for the Environment	Daily	L	---
	Maximum rainfall in one day in mm each year	Ministry for the Environment	Yearly	L	---
	Maximum rainfall in any three consecutive day period each year	Ministry for the Environment	Yearly	L	---
Sunshine hours	Number of hours of sunshine in one year	Ministry for the Environment	Yearly	L	---
Potential evapotranspiration deficit	Depth of potential evapotranspiration deficit in mm	Ministry for the Environment	Yearly	L	---
New Zealand Drought Index	Time series plot of the New Zealand Drought Index	Institute of Environmental Science and Research	Daily	L	---
Physical water stocks	Score on a measure of total physical water stocks	Ministry for the Environment	Yearly	L	---
	Score on a measure of abstraction for hydrogenation	Ministry for the Environment	Yearly	L	---
	Score on a measure of changes in lakes	Ministry for the Environment	Yearly	L	---
	Score on a measure of changes in soil moisture	Ministry for the Environment	Yearly	L	---
	Score on a measure of discharge by hydrogenation	Ministry for the Environment	Yearly	L	---
	Score on a measure of evapotranspiration	Ministry for the Environment	Yearly	L	---
	Score on a measure of inflow from other regions	Ministry for the Environment	Yearly	L	---
	Score on a measure of outflow to other regions	Ministry for the Environment	Yearly	L	---
	Score on a measure of outflow to sea	Ministry for the Environment	Yearly	L	---
Score on a measure of precipitation	Ministry for the Environment	Yearly	L	---	
Motorized Vehicles					
Driving distance	Number of km driving per person per year, by mode of transport	Ministry of Transport	Irregular	No stratification	---
Driving time	Number of hours driving per person per week, by mode of transport	Ministry of Transport	Irregular	No stratification	---
Motor vehicles	Number of households with access to a motor vehicle	Statistics New Zealand	5 Yearly	L	---

Measure	Data definition	Data source	Update frequency	Data stratified by	Data available by age
	Number of households without access to a motor vehicle	Statistics New Zealand	5 Yearly	L	---
	Number of new car registrations	Ministry for Business, Innovation and Employment	Yearly	L	---
	Number of motor vehicles, by age of vehicle	Ministry of Transport	Quarterly	Not available	---
	Number of motor vehicles by income or housing tenure status	Statistics New Zealand	5 Yearly	L	---
Electric vehicles	Number of light electric vehicle registrations	Ministry of Transport	Monthly	No stratification	---
	Number of electric vehicle make registration by location of registration	Ministry of Transport	Monthly	No stratification	---
	Number of electric vehicles	Ministry of Transport	Monthly	No stratification	---
	Number of inspection sites by electric vehicle make	Ministry of Transport	Monthly	No stratification	---
Health effects due to climate change					
Infectious diseases	Number of notifications for salmonellosis	EpiSurv	By notification	G, A, E, L, DS	Single ages
	Number of notifications for cryptosporidiosis	EpiSurv	By notification	G, A, E, L, DS	Single ages
	Number of notifications for Giardiasis	EpiSurv	By notification	G, A, E, L, DS	Single ages
Hospitalisations due to extreme temperatures and weather events	Number of hospital discharges for heat stroke	Ministry of Health	21 days	G, A, E, L, D, DS	Single ages
	Number of hospital discharges for hypothermia	Ministry of Health	21 days	G, A, E, L, D, DS	Single ages
UV Exposure					
UV index	Daily peak UV index values	Ministry for the Environment	Daily	L	---
	Monthly average peak UV index values	Ministry for the Environment	Monthly	L	---
Vitamin D deficiency	Number of hospital discharges from rickets related to vitamin D deficiency	Ministry of Health	21 days	G, A, E, L, D, DS	Single ages
	Number of hospital discharges from osteomalacia related to vitamin D deficiency	Ministry of Health	21 days	G, A, E, L, D, DS	Single ages
	Number of hospital discharges from osteoporosis related to vitamin D deficiency	Ministry of Health	21 days	G, A, E, L, D, DS	Single ages
Air Quality					
Particulate matter 10 (PM10)	Less than $\mu\text{g}/\text{m}^3$ particulate matter in air	Ministry for the Environment	Yearly	L	---
Other air pollutants	Less than $\mu\text{g}/\text{m}^3$ nitrogen dioxide in air	Ministry for the Environment	Yearly	L	---
	Annual average $\mu\text{g}/\text{m}^3$ per hour sulphur dioxide in air	Ministry for the Environment	Hourly	L	---
	Annual average $\mu\text{g}/\text{m}^3$ carbon monoxide in air	Ministry for the Environment	Yearly	L	---
	ng/m3 arsenic matter in air	Ministry for the Environment	Weekly	L	---
Public perception on air pollution	Proportion of respondents who reported New Zealand has issues with air pollution	Statistics New Zealand	Yearly	No stratification	---
	Proportion of respondents reporting the main reason for air pollution	Statistics New Zealand	Yearly	No stratification	---
Drinking Water Quality					
Access to safe drinking water	Number of people with access to safe drinking water	Ministry of Health	Yearly	L	---
Drinking water standards	Number of drinking water suppliers who were assessed to meet drinking water standards	Public Health Units	By assessment	No stratification	---
	Number of drinking water suppliers which meet bacteriological requirements	Ministry of Health	Yearly	L	---
	Number of drinking water suppliers which meet protozoa requirements	Ministry of Health	Yearly	L	---
	Number of drinking water suppliers which meet chemical requirements	Ministry of Health	Yearly	L	---
	Number of drinking water suppliers which meet microbiological requirements	Ministry of Health	Yearly	L	---

Measure	Data definition	Data source	Update frequency	Data stratified by	Data available by age
	Number of drinking water suppliers that met adequacy of supply requirements	Ministry of Health	Yearly	L	---
	Number of drinking water suppliers that met source protection requirements	Ministry of Health	Yearly	L	---
	Number of drinking water suppliers that met water safety plan requirements	Ministry of Health	Yearly	L	---
	Number of drinking water suppliers that met records requirements	Ministry of Health	Yearly	L	---
	Number of drinking water suppliers that met complaints requirements	Ministry of Health	Yearly	L	---
	Number of drinking water suppliers that met remedial action requirements	Ministry of Health	Yearly	L	---
Drinking water transgressions	Number of drinking water supplier transgressions	Public Health Units	By transgressions	No stratification	---
Drinking water related incidents	Number of drinking water incidents reported	Public Health Units	By incident	No stratification	---
Community water fluoridation status	Number of reticulated water supplies that are fluoridated	Ministry of Health	Yearly	L	---
Groundwater quality	mg/L groundwater phosphorus	Ministry for the Environment	Yearly	L	---
	mg/L groundwater iron	Ministry for the Environment	Yearly	L	---
	mg/L groundwater manganese	Ministry for the Environment	Yearly	L	---
	mg/L groundwater nitrates	Ministry for the Environment	Yearly	L	---
Wastewater					
Sewage spills	Number and volume of sewage spills	Public Health Units	By sewage spill	No stratification	---
	Location of sewage spills	Public Health Units	By sewage spill	L	---
Recreational Water Safety					
Quality of water in lakes	Median number of E.Coli per 100ml in lakes	Ministry for the Environment	Yearly	L	---
	Median bottom up dissolved nitrogen in mg/L in lakes	Ministry for the Environment	Yearly	L	---
	Median ammoniacal nitrogen in mg/L in lakes	Ministry for the Environment	Yearly	L	---
	Median oxidised nitrogen in mg/L in lakes	Ministry for the Environment	Yearly	L	---
	Median total nitrogen in mg/L in lakes	Ministry for the Environment	Yearly	L	---
	Median dissolved reactive phosphorus in mg/L in lakes	Ministry for the Environment	Yearly	L	---
	Median total phosphorous in mg/L in lakes	Ministry for the Environment	Yearly	L	---
	Median chlorophyll in mg/L in lakes	Ministry for the Environment	Yearly	L	---
	Proportion of submerged plant index of lakes	Ministry for the Environment	Yearly	L	---
	Median trophic level index in lakes	Ministry for the Environment	Yearly	L	---
	Score on a swimability band measure of lakes	Ministry for the Environment	Yearly	L	---
Quality of water in rivers	Median number of E.Coli per 100ml in rivers	Ministry for the Environment	Yearly	L	---
	Max rate of L/s of rivers	Ministry for the Environment	Yearly	L	---
	Predicted observed proportion fine sediment cover of rivers	Ministry for the Environment	Yearly	L	---
	Distance in meters until object loses sight in rivers	Ministry for the Environment	Yearly	L	---
	Predicted median nitrates in mg/L of rivers	Ministry for the Environment	Yearly	L	---
	Predicted median ammoniacal nitrogen in mg/L of rivers	Ministry for the Environment	Yearly	L	---
Public perception on quality of freshwater	Proportion of respondents who reported New Zealand has issues with rivers, lakes streams, wetlands and aquatic life	Statistics New Zealand	Yearly	No stratification	---
	Proportion of respondents reporting the main reason for issues with rivers, lakes streams, wetlands and aquatic life	Statistics New Zealand	Yearly	No stratification	---
Saltwater quality	mg/L suspended solids in mg/L in saltwater	Ministry for the Environment	One off	L	---

Measure	Data definition	Data source	Update frequency	Data stratified by	Data available by age
	Median underwater view in meters in saltwater	Ministry for the Environment	One off	L	---
	Median dissolved oxygen in mg/L in saltwater	Ministry for the Environment	One off	L	---
	Median reactive phosphorus in mg/L in saltwater	Ministry for the Environment	One off	L	---
	Median faecal coliforms on agar/100ml in saltwater	Ministry for the Environment	One off	L	---
	Median Ammonia or ammonium in mg/L in saltwater	Ministry for the Environment	One off	L	---
	Median nitrate or nitrite in mg/L in saltwater	Ministry for the Environment	One off	L	---
	Median score on pH index in saltwater	Ministry for the Environment	One off	L	---
	Median salinity in parts per 1,000 in saltwater	Ministry for the Environment	One off	L	---
	Number of enterococci per 100ml	Ministry for the Environment	One off	L	---
	Median chlorophyll in mg/L in saltwater	Ministry for the Environment	One off	L	---
	Faecal bacteria and potentially toxic algae risk at each swimming site.	Land, Air, Water Aotearoa (LAWA)	Each Week (During Summer)	L	---
Public perception on quality of saltwater	Proportion of respondents who reported New Zealand has issues with the state of the oceans and sea life	Statistics New Zealand	Yearly	No stratification	---
	Proportion of respondents who reported the main reason for issues with the state of the oceans and sea life	Statistics New Zealand	Yearly	No stratification	---
Imported Diseases					
Notifiable diseases at the border	Dataset containing number and diagnosis of notifiable diseases	Public Health Units	By notification	L	---
Overseas ship visits	Number of overseas ship visits by vessel category	Ministry for Transport	Quarterly	L	---
Exotic Mosquitoes					
Mosquito larvae presence	Number of exotic mosquito larvae caught by species	Southern Monitoring Services Limited	Monthly	L	---
High Risk Pests					
Incidents of high-risk pests infestation	Number of incidents where high risk pests caught at the border	EpiSurv	By incident	L	---
Chemical					
Lead poisoning	Number of people notified to have lead poisoning	Institute of Environmental Science and Research	Monthly	G, A, E, L, DS	Single ages
	Number of hospital discharges from lead poisoning	Ministry of Health	21 days	G, A, E, L, D, DS	Single ages
Hazardous Material (HazMat) incidents	Number of incidents, by chemical of concern	Public Health Units	By incident	L	---
Methyl bromide fumigations	Weight of methyl bromide used in Kg's	Environmental Protection Authority	Yearly	L	---
	Number of fumigations	Environmental Protection Authority	Yearly	L	---
Ionizing radiation incidents	Number of ionizing radiation source transports overseen	Public Health Units	By transport overseen	L	---
Environmental					
Asbestos	Number and location of sites identified as having asbestos	HealthScape	By notification	L	---
Cooling towers	Number of notifications for legionella due to cooling towers	EpiSurv	By notification	G, A, E, L, DS	Single ages
Contaminated land	Physical standard achievement	Ministry for the Environment	Yearly	L	---
	Organic standard achievement	Ministry for the Environment	Yearly	L	---

Measure	Data definition	Data source	Update frequency	Data stratified by	Data available by age
	Anaerobic mineralisation nitrogen standard achievement	Ministry for the Environment	Yearly	L	---
	Nitrogen standard achievement	Ministry for the Environment	Yearly	L	---
	Carbon standard achievement	Ministry for the Environment	Yearly	L	---
	pH standard achievement	Ministry for the Environment	Yearly	L	---
	Bulk density standard achievement	Ministry for the Environment	Yearly	L	---
	Macroporosity standard achievement	Ministry for the Environment	Yearly	L	---
	Olsenp standard achievement	Ministry for the Environment	Yearly	L	---
Vertebrate Toxic Agents (VTA)					
1080 drops	Weight of 1080 aerial drop in Kg's	Environmental Protection Authority	By drop	L	---
	Area of 1080 aerial drop in Km ²	Environmental Protection Authority	By drop	L	---
VTA complaints	Number of Vertebrae toxic agent complaints	Public Health Units	By complaint	L	---
Shellfish Biotoxins					
Shellfish biotoxin	Alerts for shellfish biotoxins by reason and area affected	Ministry for Primary Industries	Weekly	No stratification	---
	List of previous shellfish biotoxins by reason and area affected	Ministry for Primary Industries	By alert	No stratification	---
Indoor Environment					
Smoke free homes	Proportion of pre-schoolers who live in smoke free homes	Ministry of Health	Yearly	No stratification	---
	Proportion of Year 10 respondents who identify second hand smoke inside their house	Action for Smokefree 2025	Yearly	No stratification	---
Smoke free cars	Proportion of Year 10 respondents who identify second hand smoke inside their car	Action for Smokefree 2025	Yearly	No stratification	---
Home environment	Number of houses that have been insulated through the Tai Tokerau Healthy Homes programme	Retrofitting providers	By installation	Not available	---
	Proportion of respondents who reported their house is colder than they would like it to be	Statistics New Zealand	Yearly	No stratification	---
	Proportion of respondents who report their house being damp	Statistics New Zealand	Yearly	No stratification	---
	Proportion of respondents who reported their house is mouldy	Statistics New Zealand	Yearly	No stratification	---
	Proportion of respondents who reported that mould in their house is larger than an A4 sheet of paper	Statistics New Zealand	Yearly	No stratification	---
	Proportion of respondents who reported how often the bathroom was aired out after bathing or showering	Statistics New Zealand	Yearly	No stratification	---
	Proportion of respondents who reported how often the kitchen was aired out after cooking	Statistics New Zealand	Yearly	No stratification	---
	Proportion of respondents who reported the number of days the bathroom was aired out in the last seven days	Statistics New Zealand	Yearly	No stratification	---
	Proportion of respondents who reported the reasons for not ventilating the bathroom	Statistics New Zealand	Yearly	No stratification	---
Indoor Heating					
Home heating	Proportion of respondents who reported how often they used heating for the living room, bedroom, or youngest child's bedroom	Statistics New Zealand	Yearly	No stratification	---
	Proportion of respondents who reported the main heating source they used in the living room, bedroom, or youngest child's bedroom	Statistics New Zealand	Yearly	No stratification	---
	Proportion of respondents who reported the reasons for not heating the living	Statistics New Zealand	Yearly	No stratification	---

Measure	Data definition	Data source	Update frequency	Data stratified by	Data available by age
	room, bedroom, or youngest child's bedroom				
Heating fuel	Number of households that do not use fuel to heat dwellings	Statistics New Zealand	5 Yearly	L	---
	Number of households that use electricity to heat dwellings	Statistics New Zealand	5 Yearly	L	---
	Number of households that use mains gas to heat dwellings	Statistics New Zealand	5 Yearly	L	---
	Number of households that use bottled gas to heat dwellings	Statistics New Zealand	5 Yearly	L	---
	Number of households that use wood to heat dwellings	Statistics New Zealand	5 Yearly	L	---
	Number of households that use coal to heat dwellings	Statistics New Zealand	5 Yearly	L	---
	Number of households that use solar power to heat dwellings	Statistics New Zealand	5 Yearly	L	---
	Number of households that use other fuels to heat dwellings	Statistics New Zealand	5 Yearly	L	---

PREVENT

Measure	Data definition	Data source	Update frequency	Data stratified by	Data available by age
Food and drink consumption					
Solid food consumption	Proportion of infants on solid food before 4 months	Ministry of Health	3 yearly	G, A, E, D	4 months-4
	Proportion of infants on solid food before 6 months	Ministry of Health	3 yearly	G, A, E, D	6 months-4
Fast food consumption	Proportion of respondents who consume fast food three or more times a week	Ministry of Health	3 yearly	G, A, E, D	2-4, 5-9, 5-9, 10-14
	Proportion of respondents who consume fast food one or more times a week	Ministry of Health	3 yearly	G, A, E, D	2-4, 5-9, 5-9, 10-14
Sugary drink consumption	Proportion of respondents who consumed fizzy drinks three or more times last week	Ministry of Health	3 yearly	G, A, E, D	2-4, 5-9, 5-9, 10-14
	Proportion of respondents who consumed fizzy drinks one or more times last week	Ministry of Health	3 yearly	G, A, E, D	2-4, 5-9, 5-9, 10-14
Breakfast	Proportion of respondents who eat breakfast at home less than five days a week	Ministry of Health	3 yearly	G, A, E, D	2-4, 5-9, 10-14
	Proportion of respondents who eat breakfast at home everyday	Ministry of Health	3 yearly	G, A, E, D	2-4, 5-9, 10-14
Sedentary behaviours					
Television time	Proportion of respondents who usually watch television two or more hours a day	Ministry of Health	3 yearly	G, A, E, D	2-4, 5-9, 10-14
Screen watching	Proportion of respondents who usually watch screens two or more hours per day	Ministry of Health	3 yearly	G, A, E, D	2-4, 5-9, 10-14
Unhealthy weight					
Healthy weight	Proportion of pre-schoolers who are between the 5th and 84th weight percentile	Ministry of Health	Yearly	E, D	Preschoolers
	Mean weight (Kg)	Ministry of Health	3 yearly	G, A, E, D	2-4, 5-9, 10-14, 15-24, 25-44, 45-64, 65+
	Mean height (cm)	Ministry of Health	3 yearly	G, A, E, D	2-4, 5-9, 10-14, 15-24, 25-44, 45-64, 65+
	Mean waist size (cm)	Ministry of Health	3 yearly	G, A, E, D	2-4, 5-9, 10-14, 15-24, 25-44, 45-64, 65+
	Proportion of respondents with a waist to height ratio greater than 0.5	Ministry of Health	3 yearly	G, A, E, D	2-4, 5-9, 10-14, 15-24, 25-44, 45-64, 65+
BMI	Number and proportion of pregnant women by BMI score	Ministry of Health	Yearly	No stratification	Prenatal
	Proportion of respondents by BMI scores (<18.5, 18.5-24.9, 25-29.9, 30.0-34.9, >25, >30, >35)	Ministry of Health	3 yearly	G, A, E, D	5-9, 10-14, 15-24, 25-44, 45-64, 65+
	Mean BMI	Ministry of Health	3 yearly	G, A, E, D	5-9, 10-14, 15-24, 25-44, 45-64, 65+
	BMI of mothers at lead maternity carer registration	Ministry of Health	Yearly	No stratification	---
Tobacco Use					
Tobacco smoking	Proportion of pregnant women who smoke at the time of Lead Maternity Carer (LMC) registration	Ministry of Health	Yearly	No stratification	Prenatal
	Proportion of women who smoke at two weeks postnatal	Ministry of Health	Yearly	No stratification	2 weeks postnatal
	Proportion of Year 10 student respondents who are current smokers by frequency of smoking	Action for Smokefree 2025	3 yearly	No stratification	Year 10
	Proportion of Year 10 student respondents who report daily smoking	Action for Smokefree 2025	3 yearly	No stratification	Year 10

Measure	Data definition	Data source	Update frequency	Data stratified by	Data available by age
	Proportion of Year 10 student respondents smoking tobacco or cigarettes	Action for Smokefree 2025	3 yearly	No stratification	Year 10
	Proportion of Year 10 student respondents who smoked by number of cigarettes	Action for Smokefree 2025	3 yearly	No stratification	Year 10
	Number of usually resident population who currently smoke tobacco	Statistics New Zealand	5 yearly	G, A, E, L	15-19,.....,60-64, 65+
	Proportion of respondents who currently smoke tobacco	Ministry of Health	3 yearly	G, A, E, D	15-24, 25-44, 45-64, 65+
	Proportion of respondents who are daily smokers	Ministry of Health	3 yearly	G, A, E, D	15-24, 25-44, 45-64, 65+
	Proportion of respondents who are heavy smokers	Ministry of Health	3 yearly	G, A, E, D	15-24, 25-44, 45-64, 65+
	Number of older adults who score 0 and 1 on the tobacco and alcohol use item on the Clinical Assessment Protocol	InterRAI	Yearly	No stratification	Not available
	Proportion of older adults who score 0 and 1 on the tobacco and alcohol use item on the Clinical Assessment Protocol	InterRAI	Yearly	No stratification	Not available
Attitudes and behaviours towards tobacco smoking	Proportion of Year 10 student respondents who ever smoked	Action for Smokefree 2025	3 yearly	No stratification	Year 10
	Proportion of Year 10 student respondents who have tried a cigarette in the last 12 months	Action for Smokefree 2025	3 yearly	No stratification	Year 10
	Proportion of Year 10 student respondents who report smoking a cigarette if offered by a best friend, by likelihood	Action for Smokefree 2025	3 yearly	No stratification	Year 10
	Proportion of Year 10 student respondents who report they will smoke a cigarette in the next 12 months, by likelihood	Action for Smokefree 2025	3 yearly	No stratification	Year 10
Tobacco use by type	Proportion of respondents who mostly smoke cigarettes	Ministry of Health	3 yearly	G, A, E, D	15-24, 25-44, 45-64, 65+
	Proportion of respondents who mostly smoke tobacco	Ministry of Health	3 yearly	G, A, E, D	15-24, 25-44, 45-64, 65+
Smoking cessation	Proportion of Year 10 student respondents who have tried to quit for the first time in the past year	Action for Smokefree 2025	3 yearly	No stratification	Year 10
	Proportion of respondents who are ex-smokers	Ministry of Health	3 yearly	G, A, E, D	15-24, 25-44, 45-64, 65+
	Number of clients enrolling in the District Health Board (DHB) smoking cessation programme	Tobacco control data repository	Yearly	A, G, E	<19, 19-29, ..., 60+
	Proportion of smoking cessation enrolees prescribed nicotine gum	Tobacco control data repository	Yearly	No stratification	---
	Proportion of smoking cessation enrolees prescribed nicotine lozenges	Tobacco control data repository	Yearly	No stratification	---
	Proportion of smoking cessation enrolees prescribed nicotine patches	Tobacco control data repository	Yearly	No stratification	---
	Proportion of people receiving smoking cessation interventions other than cessation	Tobacco control data repository	Yearly	No stratification	---
	Proportion of clients in smoking cessation programs that receive medications to support cessation	Tobacco control data repository	Yearly	No stratification	---
	Proportion of smoking cessation enrolees with validated 4 week abstinence	Tobacco control data repository	Yearly	No stratification	---
	Proportion of smoking cessation enrolees with self-reported 4 week abstinence	Tobacco control data repository	Yearly	No stratification	---
	Proportion of smoking cessation enrolees with validated 3 month abstinence	Tobacco control data repository	Yearly	No stratification	---
	Proportion of smoking cessation enrolees with self-reported 3 month abstinence	Tobacco control data repository	Yearly	No stratification	---
Proportion of smoking cessation clients who relapse in selected time ranges	Tobacco control data repository	Yearly	No stratification	---	
Risky Alcohol Consumption					
Heavy episodic drinking	Proportion of respondents who are heavy episodic drinkers at least weekly in the past year	Ministry of Health	3 yearly	G, A, E, D	15-24, 25-44, 45-64, 65+
	Proportion of respondents who are heavy episodic drinkers at least weekly	Ministry of Health	3 yearly	G, A, E, D	15-24, 25-44, 45-

Measure	Data definition	Data source	Update frequency	Data stratified by	Data available by age
					64, 65+
	Proportion of respondents who are heavy episodic drinkers in the past year	Ministry of Health	3 yearly	G, A, E, D	15-24, 25-44, 45-64, 65+
	Proportion of respondents who are heavy episodic drinkers	Ministry of Health	3 yearly	G, A, E, D	15-24, 25-44, 45-64, 65+
Hazardous drinking	Proportion of respondents who are hazardous drinkers in the past year	Ministry of Health	3 yearly	G, A, E, D	15-24, 25-44, 45-64, 65+
	Proportion of respondents who are hazardous drinkers	Ministry of Health	3 yearly	G, A, E, D	15-24, 25-44, 45-64, 65+
Adverse alcohol effects	Number of hospital discharges for alcohol abuse and dependence	Ministry of Health	21 days	G, A, E, L, D, DS	Single ages
	Number of hospital discharges due to wholly attributable (to alcohol) conditions	Ministry of Health	21 days	G, A, E, L, D, DS	Single ages
Illicit Drug Use					
Cannabis use	Proportion of respondents who used cannabis in the past year	Ministry of Health	3 yearly	G, A, E, D	15-24, 25-44, 45-64, 65+
	Number of hospital discharges for cannabis abuse or dependence	Ministry of Health	21 days	G, A, E, L, D, DS	Single ages
	Number of mental health comorbid cannabis abuse or dependence diagnoses	Northland District Health Board	Daily	G, A, E, L, D	Single ages
Amphetamine use	Proportion of respondents who used methamphetamine in the past year	Ministry of Health	3 yearly	G, A, E, D	15-24, 25-44, 45-64, 65+
	Number of hospital discharges for amphetamine abuse or dependence	Ministry of Health	21 days	G, A, E, L, D, DS	Single ages
	Number of mental health comorbid amphetamine abuse or dependence diagnoses	Northland District Health Board	Daily	G, A, E, L, D	Single ages
Other psychoactive substances	Number of hospital discharges for hallucinogen abuse, dependence, or adverse side effects	Ministry of Health	21 days	G, A, E, L, D, DS	Single ages
	Number of hospital discharges for opioid abuse, dependence, or adverse side effects	Ministry of Health	21 days	G, A, E, L, D, DS	Single ages
	Number of hospital discharges for cocaine abuse, dependence, or adverse side effects	Ministry of Health	21 days	G, A, E, L, D, DS	Single ages
	Number of hospital discharges for sedatives, hypnotics, anxiolytics, tranquilizers, barbiturates abuse or dependence	Ministry of Health	21 days	G, A, E, L, D, DS	Single ages
Withdrawals	Number of hospital discharges for drug withdrawals	Ministry of Health	21 days	G, A, E, L, D, DS	Single ages
Drug rehabilitation admissions	Number of people admitted to in-house drug rehabilitation units	Northland District Health Board	Quarterly	G, A, E, L, D	Single ages
Drugs in wastewater	Rate of methamphetamine use in mg/week/100-people	New Zealand Police	Monthly	L	---
	Rate of cocaine use in mg/week/100-people	New Zealand Police	Monthly	L	---
	Rate of fentanyl use in mg/week/100-people	New Zealand Police	Monthly	L	---
	Rate of heroin use in mg/week/100-people	New Zealand Police	Monthly	L	---
	Rate of MDMA use in mg/week/100-people	New Zealand Police	Monthly	L	---
	Amount of methamphetamine consumed in g/week	New Zealand Police	Monthly	L	---
	Amount of cocaine consumed in g/week	New Zealand Police	Monthly	L	---
	Amount of fentanyl consumed in g/week	New Zealand Police	Monthly	L	---
	Amount of heroin consumed in g/week	New Zealand Police	Monthly	L	---
	Amount of MDMA consumed in g/week	New Zealand Police	Monthly	L	---
	Amount of methamphetamine consumed in µg/L	New Zealand Police	Monthly	L	---
	Amount of cocaine consumed in µg/L	New Zealand Police	Monthly	L	---
	Amount of fentanyl consumed in µg/L	New Zealand Police	Monthly	L	---
	Amount of heroin consumed in µg/L	New Zealand Police	Monthly	L	---

Measure	Data definition	Data source	Update frequency	Data stratified by	Data available by age
	Amount of MDMA consumed in µg/L	New Zealand Police	Monthly	L	---
Gambling					
Pokie machines	Number of gambling machines by venue	Department of Internal Affairs	3 Monthly	L	---
Gambling expenditure	Total gambling expenditure in dollars	Department of Internal Affairs	3 Monthly	L	---
Gambling helpline	Number of new clients accessing gambling helplines	Ministry of Health	Yearly	Not available	---
Gambling interventions	Number of people who participated in gambling interventions	Ministry of Health	Annual	L	---
	Number of people who participated in gambling interventions, excluding brief interventions	Ministry of Health	Annual	L	---
Abuse and Neglect					
Abuse	Number of hospital discharges for diagnoses of assault	University of Otago	Yearly	G, A, E, L	0-4, 5-9,85+
	Number of hospital discharges for diagnoses of neglect	Ministry of Health	21 days	G, A, E, L, D, DS	Single ages
	Number of hospital discharges for diagnoses of maltreatment	Ministry of Health	21 days	G, A, E, L, D, DS	Single ages
	Number of distinct child and youth substantiated abuse findings	Ministry of Social Development	Yearly	L	0-18
	Number of older adults who score 0 ,1, or 2 on the abusive relationships item on the Clinical Assessment Protocol	InterRAI	Yearly	No stratification	Not available
	Proportion of older adults who score 0 ,1, or 2 on the abusive relationships item on the Clinical Assessment Protocol	InterRAI	Yearly	No stratification	Not available
Victimisations	Number of abduction, harassment, and other related offences	New Zealand Police	Monthly	G, A, E	5-9,10-14,....80+
	Number of acts intended to cause injury victimisations	New Zealand Police	Monthly	G, A, E	5-9,10-14,....80+
	Number of robbery, extortion and related offences victimisations	New Zealand Police	Monthly	G, A, E	5-9,10-14,....80+
	Number of sexual assault and related offences victimisations	New Zealand Police	Monthly	G, A, E	5-9,10-14,....80+
	Number of theft and related offences victimisations	New Zealand Police	Monthly	G, A, E	5-9,10-14,....80+
	Number of unlawful entry with intent, burglary, break and enter offences victimisations	New Zealand Police	Monthly	G, A, E	5-9,10-14,....80+
Out of home placement	Number of distinct child and youth out of home placements	Ministry of Social Development	Yearly	L	0-18
Physical punishment	Proportion of children who were physically punished in the past four weeks	Ministry of Health	3 yearly	G, A, E, D	0-4, 5-9, 10-14
Oranga Tamariki notifications	Number of Oranga Tamariki notifications	Ministry of Social Development	Yearly	L	0-18
Family group conferences	Number of family group conferences	Ministry of Social Development	Yearly	L	0-18
Sun Exposure					
Melanoma registrations	Number of melanoma registrations	Ministry of Health	Yearly	G, A, E, L, DS	0-24, 25-44, 45-64, 65-74, 75+
Non-melanoma registrations	Number of non-melanoma skin cancer registrations	Ministry of Health	Yearly	G, A, E, L, DS	0-24, 25-44, 45-64, 65-74, 75+
Immunisation					
Immunisation status	Proportion of children who are fully immunised at 6 months	Ministry of Health	Quarterly	E, D	6 months
	Proportion of children who are fully immunised at 8 months	Ministry of Health	Yearly	E, D	8 months
	Proportion of children who are fully immunised at 12 months	Ministry of Health	Quarterly	E, D	12 months
	Proportion of children who are fully immunised at 18 months	Ministry of Health	Quarterly	E, D	18 months
	Proportion of children who are fully immunised at 24 months	Ministry of Health	Quarterly	E, D	24 months
	Proportion of children who are fully immunised at 5 years	Ministry of Health	Quarterly	E, D	5 years
	Proportion of adolescents given Boostrix	Ministry of Health	Quarterly	G, A, E, L, D	Single ages

Measure	Data definition	Data source	Update frequency	Data stratified by	Data available by age
	Proportion of adolescents given Gardasil	Ministry of Health	Quarterly	G, A, E, L, D	Single ages
	Number of people administered the ADT booster	Ministry of Health	Quarterly	G, A, E, L, D	Single ages
	Number of older adults administered Zostavax	Ministry of Health	Quarterly	G, A, E, L, D	Single ages
	Number of older adults administered Influxac Tetra	Ministry of Health	Quarterly	G, A, E, L, D	Single ages
Healthy Eating					
Breastfeeding	Proportion of mothers who exclusively breastfeed at two weeks	Ministry of Health	Yearly	E, D	2 weeks
	Proportion of infants who are exclusively breastfed at six weeks	Ministry of Health	Yearly	E, D	6 weeks
	Proportion of infants who are exclusively breastfed at three months	Ministry of Health	Yearly	E, D	3 months
	Proportion of infants who are exclusively breastfed at four months	Ministry of Health	3 yearly	G, E, D	4 months-4
	Proportion of infants who are breastfed at six months	Ministry of Health	Yearly	E, D	6 months
	Proportion of infants who are exclusively breastfed until six months	Ministry of Health	3 yearly	G, E, D	6 months-4
Fruit and vegetable intake	Proportion of respondents who eat two or more servings of fruit a day	Ministry of Health	3 yearly	G, A, E, D	2-4, 5-9, 10-14, 15-24, 25-44, 45-64, 65+
	Proportion of respondents who eat three or more servings of vegetables a day	Ministry of Health	3 yearly	G, A, E, D	2-4, 5-9, 10-14, 15-24, 25-44, 45-64, 65+
	Proportion of respondents who eat the recommended servings for fruit and vegetables each day	Ministry of Health	3 yearly	G, A, E, D	2-4, 5-9, 10-14, 15-24, 25-44, 45-64, 65+
Physical Activity					
Participation in physical activity	Proportion of respondents who do little or no physical activity	Ministry of Health	3 yearly	G, A, E, D	2-4, 5-9, 10-14, 15-24, 25-44, 45-64, 65+
	Proportion of respondents who are physically active	Ministry of Health	3 yearly	G, A, E, D	2-4, 5-9, 10-14, 15-24, 25-44, 45-64, 65+
	Proportion of respondents who are highly physically active	Ministry of Health	3 yearly	G, A, E, D	2-4, 5-9, 10-14, 15-24, 25-44, 45-64, 65+
	Proportion of respondents who meet physically activity guidelines	Sport New Zealand	Irregular	A	5-17, 18+
	Number of older adults who score 0 , 1 , and 2 on the activities of daily living item on the Clinical Assessment Protocol	InterRAI	Yearly	No stratification	Not available
	Proportion of older adults who score 0 , 1 , and 2 on the activities of daily living item on the Clinical Assessment Protocol	InterRAI	Yearly	No stratification	Not available
	Number of older adults who score 0 and 1 on the physical activities promotion item of the Clinical Assessment Protocol	InterRAI	Yearly	No stratification	Not available
	Proportion of older adults who score 0 and 1 on the physical activities promotion item of the Clinical Assessment Protocol	InterRAI	Yearly	No stratification	Not available
Time spent on physical activity	Number of hours spent walking per person per week	Ministry of Transport	Irregular	No stratification	---
	Number of hours spent walking per year (in millions)	Ministry of Transport	Irregular updates	No stratification	---
	Average number of hours spent in a week in sport	Sport New Zealand	Irregular	A	5-17, 18+
	Amount of time physically active by time ranges	Sport New Zealand	Irregular	A	5-17, 18+
	Average number of hours spent exercising by type of exercise	Sport New Zealand	Irregular	A	5-17, 18+
	Proportion of respondents who have done any physical activity in the last week	Sport New Zealand	Irregular	A	5-17, 18+

Measure	Data definition	Data source	Update frequency	Data stratified by	Data available by age
	Proportion of respondents who breath harder than normal due to exercise for one to seven days of the week	Sport New Zealand	Irregular	A	5-17, 18+
	Proportion of respondents who have been more than 60 minutes of physically active per day, by number of days in a week	Sport New Zealand	Irregular	A	5-17, 18+
	Proportion of respondents that done physical activity for sport, exercise, and recreation	Sport New Zealand	Irregular	No stratification	18+
	Average amount of sporting activities	Sport New Zealand	Irregular	A	5-17, 18+
Physical activity type	Proportion of respondents who engaged in physical activity in the last seven days, by physical activity type	Sport New Zealand	Irregular	A	5-17, 18+
Attitudes and behaviour towards physical activity	Proportion of respondents that were motivated for sport or exercise, by motivation source	Sport New Zealand	Irregular	A	5-17, 18+
	Proportion of children not doing more physical activity by reason provided	Sport New Zealand	Irregular	A	5-17, 18+
	Proportion of agreement with how much they liked PE at school	Sport New Zealand	Irregular	A	5-17, 18+
	Proportion of agreement with how much they liked physical education after it was no longer compulsory	Sport New Zealand	Irregular	A	5-17, 18+
	Proportion of agreement with how much they liked physical education if they dropped the physical education subject as their school subject	Sport New Zealand	Irregular	A	5-17, 18+
	Proportion of respondents who want to do more activity	Sport New Zealand	Irregular	A	5-17, 18+
Active transport	Proportion of respondents who walk, bike, skate, or similar to and from school	Ministry of Health	3 yearly	G, A, E, D	5-9, 10-14
	Proportion of respondents who reported that their most common means of travel to work was walking or jogging	Statistics New Zealand	5 yearly	G, A, L	15-19,...60-64, 65+
	Proportion of respondents who reported that their most common means of travel to work was cycling	Statistics New Zealand	5 yearly	G, A, L	15-19,...60-64, 65+
	Number of km walked per year per person	Ministry of Transport	Irregular	No stratification	---
Injury Prevention					
Seat belt use	Proportion of children who wear child restraints	Ministry of Transport	Yearly	No stratification	<7
	Proportion of respondents who reported using seat belts in the front seat	Ministry of Transport	Yearly	G, RU	---
	Proportion of respondents who reported using seat belts in the rear seat	Ministry of Transport	Yearly	G, L	---
Bicycle helmets	Proportion of people who wear bicycle helmets	Ministry of Transport	Yearly	No stratification	---
Car speeds	Mean speed of drivers on open roads	Ministry of Transport	Yearly	No stratification	---
	Mean speed of drivers on urban roads	Ministry of Transport	Yearly	No stratification	---
Healthcare Associated Infection Prevention					
Antimicrobial usage in hospitals	Number of defined daily doses used per 1,000 occupied bed days	Northland District Health Board	Daily	L	---
Incidence of staphylococcus bacteraemia in hospitals	Rate per 10,000 population of staphylococcus bacteraemia infections in hospitals	Institute of Environmental Science and Research	By notification	G, A, E, L, DS	Single ages
Multi-resistant healthcare associated infections	Rate per 10,000 population of antimicrobial resistance infections	Institute of Environmental Science and Research	By notification	G, A, E, L, DS	Single ages
Screening					
Ultrasound screening	Proportion of pregnant women who completed an ultrasound	Ministry of Health	Weekly	G, A, E, L, D, DS	Single ages
Antenatal screening	Proportion of pregnant mothers who had ANC screening	Northland District Health Board	Daily	G, A, E, L, D	Single ages
Laboratory tests²	Number of laboratory tests ordered, by laboratory test description	Ministry of Health	Monthly	G, A, E, L	Single ages

² Laboratory test information is collected by the Ministry of Health in the Laboratory Claims Data Mart. Information for each test has a unique identifier (i.e. Glucose tolerance test standard).

Measure	Data definition	Data source	Update frequency	Data stratified by	Data available by age
Newborn hearing screening	Number of newborn's who had hearing screening	Northland District Health Board	By screening	G, E, L, D	<3months
Newborn metabolic screening	Number of newborn's who had newborn metabolic screening	Northland District Health Board	By screening	G, E, L, D	48 Hours
Retinal screening	Number of people who had retinal screening	Northland District Health Board	Daily	G, A, E, L, D	Single ages
Sexually transmitted infections (STI's) screening	Number of specimens collected for chlamydia	Nationwide Service Framework Library	Yearly	G, A, E	Single ages
	Number of specimens collected for gonorrhoea	Institute of Environmental Science and Research	By specimen	Not available	---
Breast screening	Number of women who have had breast screening	National Screening Unit	By screening	E	50-69
	Coverage of eligible women who have had breast screening	National Screening Unit	3 Monthly	E	50-69
Cervical screening	Number of women who have had cervical screening	National Screening Unit	3 Monthly	E	25-69
	Coverage of eligible women who have had cervical screening	National Screening Unit	3 Monthly	E	25-69
Prostate screening	Number of males who have had prostate screening	Mahitahi Hauora – Primary Healthcare Entity	Daily	Not available	---
Preventative screening³	Number of older adults who score 0, 1, or 2 on the preventative screening item on the Clinical Assessment Protocol	InterRAI	Yearly	No stratification	Not available
	Proportion of older adults who score 0, 1, or 2 on the preventative screening item on the Clinical Assessment Protocol	InterRAI	Yearly	No stratification	Not available

³ Preventative screening and vaccinations from InterRAI provides data on whether a physician should visit with regards to the previous screening and vaccinations the person has had.

HEALTH OUTCOMES

Measure	Data definition	Data source	Update frequency	Data stratified by	Data available by age
Life Expectancy					
Life expectancy	The average number of years a person could expect to live	Statistics New Zealand	5 yearly	G, A, E, L	Single ages
Mortality					
Perinatal mortality	Number of still births resulting from a delivery	Ministry of Health	Weekly	G, E, L, DS	Birth
	Number of still births	Statistics New Zealand	Yearly	E	Birth
	Number of fetal deaths	Ministry of Health	Yearly	G, E, A, D	<20, 20-24, ..., 40+ (Mother)
	Rate of fetal deaths per 1,000 population per annum	Ministry of Health	Yearly	G, E, A, D	<20, 20-24, ..., 40+ (Mother)
	Number of neonatal deaths	Ministry of Health	Two weekly	G, E, L, DS	Birth
	Number of post – neonatal deaths	Ministry of Health	Two weekly	G, E, L, DS	Birth
Death rate	Number of deaths per 100,000 population	Ministry of Health	Two weekly	G, A, E, L, DS	Single ages
	Proportion of people who had an emergency admission to ICU who died in ICU	Health Quality and Safety Commission	Yearly	A, E	18-44, 45-64, 65-74, 75-84, 85+
Causes of death	Number of deaths for the top ten leading causes of death	Ministry of Health	Two weekly	G, A, E, L, DS	Single ages
	Drivers in fatal crashes affected by alcohol	Ministry of Transport	By crash	A, G, E, L	Single ages
	Number of deaths due to work – related accidents	Ministry of Health	Two weekly	G, A, E, L, DS	Single ages
	Number of fatal work – related ACC claims	Statistics New Zealand	Yearly	No stratification	---
Potentially avoidable deaths	Number of deaths from the top 5 amenable mortality conditions	Ministry of Health	Yearly	E, DS	---
	Amenable mortality rate	Ministry of Health	Yearly	E	---
Quality of Life					
Life satisfaction	Number of people reporting overall life satisfaction by housing satisfaction and housing problems	Statistics New Zealand	5 yearly	No stratification	---
	Number of people reporting overall life satisfaction by degree of loneliness	Statistics New Zealand	5 yearly	No stratification	---
	Number of people reporting overall life satisfaction by income adequacy	Statistics New Zealand	5 yearly	No stratification	---
	Number of people reporting overall life satisfaction by self – rated health	Statistics New Zealand	5 yearly	No stratification	---
	Proportion of respondents who report that life is worthwhile on a scale from one to 10	Statistics New Zealand	Yearly	No stratification	---
Family wellbeing	Proportion of respondents who report their families wellbeing on a scale from one to 10	Statistics New Zealand	Yearly	No stratification	---
Financial wellbeing	Proportion of respondents who report various degrees of adequacy of income to meet every day needs	Statistics New Zealand	Yearly	No stratification	---
Health status	Proportion of respondents who agreed reporting their health status as being excellent, very good, good, or fair/poor	Statistics New Zealand	5 yearly	No stratification	---
Self-reported Health Status					
Parent-rated health	Proportion of parent respondents ratings by their child's health status on a likert scale	Ministry of Health	3 yearly	G, A, E, D	0 – 4, ..., 10 – 14
Self-rated health	Proportion of respondent's rating of their health status on a likert scale	Ministry of Health	3 yearly	G, A, E, D	15 – 24, 25 – 44, 45 – 64, 65+
Pregnancies					

Measure	Data definition	Data source	Update frequency	Data stratified by	Data available by age
Termination of pregnancies (TOP)	Number of pregnancy terminations	Statistics New Zealand	Yearly	A	<20, 20 – 24, ..., 35 – 39, 40+
Complications during pregnancy	Number of antenatal admissions	Northland District Health Board	Daily	G, A, E, L, D	Prenatal
	Number of women diagnosed with preeclampsia or eclampsia	Ministry of Health	Weekly	G, A, E, L, D, DS	Single ages (Mother)
	Number of antenatal hospital events with an obstetric principal diagnosis	Ministry of Health	Weekly	G, A, E, L, D, DS	Single ages (Mother)
	Number of threatened miscarriages or abortions during pregnancy	Ministry of Health	Weekly	G, A, E, L, D, DS	Single ages (Mother)
	Number of planned caesareans	Ministry of Health	Weekly	G, A, E, L, D, DS	Single ages (Mother)
	Number of false labour hospital admissions	Ministry of Health	Weekly	G, A, E, L, D, DS	Single ages (Mother)
Deliveries					
Type of delivery	Number and proportion of spontaneous vaginal births among standard primiparae	Ministry of Health	Yearly	E, D	Birth
	Number and proportion of instrumental vaginal births among standard primiparae	Ministry of Health	Yearly	E, D	Birth
	Number of home births	Ministry of Health	Yearly	No stratification	Birth
	Number and proportion of women who had a caesarean section under general anaesthetic	Ministry of Health	Yearly	E, D	Birth
	Number of epidurals administered	Ministry of Health	Weekly	G, A, E, L, D, DS	Single ages (Mother)
	Number of pregnant women who had medical or surgical augmentation of labour	Ministry of Health	Yearly	E, D	Birth
	Number of emergency caesarean procedures	Ministry of Health	Yearly	No stratification	Birth
	Number of women who receive medical or surgical labour induction	Ministry of Health	Weekly	G, A, E, L, D, DS	Single ages (Mother)
	Parity of the birth	Ministry of Health	Yearly	No stratification	Birth
Preterm births	Proportion of preterm deliveries	Ministry of Health	Yearly	E, D	Birth
Gestational age	Number of new-borns at different gestation age in weeks	Ministry of Health	Weekly	G, A, E, L, D, DS	Single ages (Mother)
Birth weight	Birth weight in grams	Ministry of Health	Weekly	G, A, E, L, D, DS	Single ages (Mother)
	Number and proportion of new-borns with a low birth weight	Ministry of Health	Yearly	E, D	Birth
Physical condition of the mother	Number and proportion of women having a peripartum hysterectomy	Ministry of Health	Yearly	E, D	Birth
	Number and proportion of women requiring over 24 hours of mechanical ventilation during or after pregnancy	Ministry of Health	Yearly	E, D	Birth
	Number of postnatal hospital events with an obstetric principal diagnosis	Ministry of Health	Weekly	G, A, E, L, D, DS	Single ages (Mother)
	Number of women having postpartum haemorrhage	Ministry of Health	Weekly	G, A, E, L, D, DS	Single ages (Mother)
	Number of pregnant women and the status of their physical condition after delivery	Ministry of Health	Weekly	G, A, E, L, D, DS	Single ages (Mother)
	Number and proportion of standard primiparae giving birth vaginally with intact lower genital tract	Ministry of Health	Yearly	E, D	Birth
Physical condition of the newborn	Number of births not in the head first direction	Ministry of Health	Weekly	G, A, E, L, D, DS	Single ages (Mother)

Measure	Data definition	Data source	Update frequency	Data stratified by	Data available by age
	Number of new-borns and the status of their physical condition	Ministry of Health	Weekly	G, A, E, L, D, DS	Single ages (Mother)
	Number of new-borns by apgar score	Ministry of Health	Weekly	G, A, E, L, D, DS	Single ages (Mother)
	Number and proportion of new-borns born at 37+ weeks' gestation requiring respiratory support	Ministry of Health	Yearly	E, D	Birth
	Number of new-borns placed on mechanical ventilation for respiratory support	Ministry of Health	Weekly	G, A, E, L, D, DS	Single ages (Mother)
	Number of new-borns on continuous positive airway pressure within 92 days after birth	Ministry of Health	Weekly	G, A, E, L, D, DS	Single ages (Mother)
Congenital Disorders					
Birth defects	Number of new-borns born with birth defects	New Zealand Birth Defects Registry	Yearly	G, E	Birth
	The top five most common birth defects	New Zealand Birth Defects Registry	Yearly	G, E	Birth
Sexually Transmitted Infections (STIs)					
STIs	Number of notifications for chlamydia	Institute of Environmental Science and Research	By notification	G, A, E, L, DS	Single ages
	Number of notifications for gonorrhoea	Institute of Environmental Science and Research	By notification	G, A, E, L, DS	Single ages
	Number of notifications for genital herpes	Institute of Environmental Science and Research	By notification	G, A, E, L, DS	Single ages
	Number of notifications for genital warts	Institute of Environmental Science and Research	By notification	G, A, E, L, DS	Single ages
	Number of notifications for infectious syphilis	Institute of Environmental Science and Research	By notification	G, A, E, L, DS	Single ages
	Number of notifications for non-specific urethritis	Institute of Environmental Science and Research	By notification	G, A, E, L, DS	Single ages
Prevalence of preventable chronic conditions					
Cancer incidence and survival rates	Number of cancer notifications by tumour location, morphology, malignancy, and grade	Ministry of Health	Not available	G, A, E, L, DS	Single ages
Prevalence of CVD	Proportion of respondents who reported having high cholesterol who are medicated	Ministry of Health	3 yearly	G, A, E, D	10 – 14, 15 – 24, 25 – 44, 45 – 64, 65+
	Proportion of respondents who reported having high blood pressure who are medicated	Ministry of Health	3 yearly	G, A, E, D	10 – 14, 15 – 24, 25 – 44, 45 – 64, 65+
	Proportion of respondents who had raised blood pressure	Ministry of Health	3 yearly	G, A, E, D	10 – 14, 15 – 24, 25 – 44, 45 – 64, 65+
	Mean systolic blood pressure among respondents	Ministry of Health	3 yearly	G, A, E, D	10 – 14, 15 – 24, 25 – 44, 45 – 64, 65+
	Mean diastolic blood pressure among respondents	Ministry of Health	3 yearly	G, A, E, D	10 – 14, 15 – 24, 25 – 44, 45 – 64, 65+
	Proportion of respondents who reported having ischemic heart disease	Ministry of Health	3 yearly	G, A, E, D	10 – 14, 15 – 24, 25 – 44, 45 – 64, 65+
	Proportion of respondents who reported having a stroke	Ministry of Health	3 yearly	G, A, E, D	10 – 14, 15 – 24, 25 – 44, 45 – 64, 65+
	Proportion of respondents who reported having heart failure	Ministry of Health	3 yearly	G, A, E, D	10 – 14, 15 – 24, 25 – 44, 45 – 64, 65+
	Number of hospital discharges for a CVD event	Ministry of Health	21 days	G, A, E, L, D, DS	Single ages

Measure	Data definition	Data source	Update frequency	Data stratified by	Data available by age
Prevalence of COPD	Hospital discharges for chronic obstructive pulmonary disease	Ministry of Health	21 days	G, A, E, L, D, DS	Single ages
	Number and proportion age of older adults who score 0 or 1 on the cardiorespiratory conditions item on the Clinical Assessment Protocol	InterRAI	Yearly	No stratification	Not available
Prevalence of diabetes	Proportion of respondents who reported having Type 2 diabetes	Ministry of Health	3 yearly	G, A, E, D	15 – 24, 25 – 44, 45 – 64, 65+
	Proportion of respondents who reported having diabetes	Ministry of Health	3 yearly	G, A, E, D	15 – 24, 25 – 44, 45 – 64, 65+
	Number of people in the virtual diabetes register	Ministry of Health	Yearly	G, A, E, L, D	Single ages
	Proportion of people with diabetes who were admitted to hospital for diabetic ketoacidosis	Health Quality and Safety Commission	Yearly	A, E	0-24, 25-44, ... , 75+
	Proportion of people with diabetes who were admitted to hospital for hypoglycaemia	Health Quality and Safety Commission	Yearly	A, E	0-24, 25-44, ... , 75+
	Proportion of people with diabetes who have regular HbA1c monitoring	Ministry of Health	21 days	G, A, E, L, D, DS	Single ages
	Proportion of people with diabetes who have regular screening for renal disease (ACR)	Health Quality and Safety Commission	Yearly	A, E	0-24, 25-44, ... , 75+
	Proportion of people with diabetes who have regular monitoring for renal disease (eGFR)	Health Quality and Safety Commission	Yearly	A, E	0-24, 25-44, ... , 75+
Prevalence of skin disorders	Proportion of respondents reported to have eczema who are medicated	Ministry of Health	3 yearly	G, A, E, D	5-9, 10-14
Prevalence of asthma	Proportion of respondents reported to have asthma who are medicated	Ministry of Health	3 yearly	G, A, E, D	2-4, 5-9, 10-14, 15-24, 25-44, 45-64, 65+
	Childhood hospital discharges due to asthma or wheeze	Ministry of Health	21 days	G, A, E, L, D, DS	Single ages
	Adult hospital discharges due to asthma	Ministry of Health	21 days	G, A, E, L, D, DS	Single ages
	Proportion of people with at least two admissions within 90 day of each other	Health Quality and Safety Commission	Yearly	G, A, E	0-4, 5-9, 10-14, 15-24, 25-49
	Proportion of people with at least two admissions between 91 and 365 days of each other	Health Quality and Safety Commission	Yearly	G, A, E	0-4, 5-9, 10-14, 15-24, 25-49
Prevalence of arthritis	Proportion of respondents who reported having arthritis	Ministry of Health	3 yearly	G, A, E, D	15 – 24, 25 – 44, 45 – 64, 65+
	Proportion of respondents who reported having rheumatoid arthritis	Ministry of Health	3 yearly	G, A, E, D	15 – 24, 25 – 44, 45 – 64, 65+
	Proportion of respondents who reported having osteoarthritis	Ministry of Health	3 yearly	G, A, E, D	15 – 24, 25 – 44, 45 – 64, 65+
Prevalence of gout	Proportion of respondents who reported having gout	Ministry of Health	3 yearly	G, A, E, D	15 – 24, 25 – 44, 45 – 64, 65+
	Prevalence of identified gout	Health Quality and Safety Commission	Yearly	G, A, E	20-44, 45-64, 85+
	Rate per 100,000 population who had a hospital discharge with a primary diagnosis of gout	Health Quality and Safety Commission	Yearly	G, A, E	20-44, 45-64, 85+
Prevalence of chronic pain	Proportion of respondents who reported having chronic pain	Ministry of Health	3 yearly	G, A, E, D	15 – 24, 25 – 44, 45 – 64, 65+
	Number and proportion of older adults who score 0, 1, or 2 on the pain item on the Clinical Assessment Protocol	interRAI	Yearly	No stratification	---
Prevalence of dental caries	Proportion of pre-schoolers caries-free	Ministry of Health	Yearly	E, D	Pre-schoolers
	Mean decayed, missing, filled deciduous teeth (dmft) score at age 5	Ministry of Health	Yearly	E, D	5
	Mean decayed, missing, filled permanent teeth (DMFT) score at Year 8	Ministry of Health	Yearly	E, D	Year 8
	Number of children who completed treatment before age 6	Ministry of Health	Yearly	E	<6
	Number of Year 8 children that completed dental treatment	Ministry of Health	Yearly	E	Year 8

Measure	Data definition	Data source	Update frequency	Data stratified by	Data available by age
	Proportion of respondents who had teeth removed due to tooth decay in past 12 months	Ministry of Health	3 yearly	G, A, E, D	1 – 4, 5 – 9, 10 – 14, 15 – 24, 25 – 44, 45 – 64, 65+
	Proportion of respondents who had teeth removed due to tooth decay	Ministry of Health	3 yearly	G, A, E, D	2 – 4, 5 – 9, 10 – 14, 15 – 24, 25 – 44, 45 – 64, 65+
	Proportion of respondents who have had all teeth removed	Ministry of Health	3 yearly	G, A, E, D	15 – 24, 25 – 44, 45 – 64, 65+
	Number of people who had teeth removed due to decay under General Anaesthesia	Northland District Health Board	Daily	G, A, E, L, D	Single ages
Mental illness					
Prevalence of psychological distress	Proportion of respondents scoring 12 or more on the K10	Ministry of Health	3 yearly	G, A, E, D	15 – 24, 25 – 44, 45 – 64, 65+
Mental health conditions (adult)	Proportion of respondents who reported to have depression	Ministry of Health	3 yearly	G, A, E, D	15 – 24, 25 – 44, 45 – 64, 65+
	Proportion of respondents who reported to have an anxiety disorder	Ministry of Health	3 yearly	G, A, E, D	15 – 24, 25 – 44, 45 – 64, 65+
	Proportion of respondents who reported to have depression, anxiety, and/or bipolar disorder	Ministry of Health	3 yearly	G, A, E, D	15 – 24, 25 – 44, 45 – 64, 65+
	Number adults diagnosed with a mental health disorder(s), by diagnosis	Ministry of Health	Not available	G, A, E, L, DS	Single ages
	Mean HONOS score	Ministry of Health	Not available	G, A, E, L, DS	Single ages
	Number of hospital discharges for drug induced mental disorders	Ministry of Health	21 days	G, A, E, L, D, DS	Single ages
Mental health conditions (0-15-year-olds)	Proportion of respondents who reported their child has autism spectrum disorder	Ministry of Health	3 yearly	G, A, E, D	2 – 4, 5 – 9, 10 – 14
	Proportion of respondents who reported their child has attention deficit hyperactivity disorder	Ministry of Health	3 yearly	G, A, E, D	2 – 4, 5 – 9, 10 – 14
	Proportion of respondents who reported their child has depression	Ministry of Health	3 yearly	G, A, E, D	2 – 4, 5 – 9, 10 – 14
	Proportion of respondents who reported their child has an anxiety disorder	Ministry of Health	3 yearly	G, A, E, D	2 – 4, 5 – 9, 10 – 14
	Proportion of respondents who reported their child has depression, an anxiety disorder, or attention deficit hyperactivity disorder	Ministry of Health	3 yearly	G, A, E, D	2 – 4, 5 – 9, 10 – 14
	Number of children diagnosed with a mental health disorder(s), by diagnosis	Ministry of Health	Not available	G, A, E, L, DS	Single ages
Mental health condition of older adults	Number and proportion of older adults who score 0, 1, or 2 on the cognitive loss item on the Clinical Assessment Protocol	InterRAI	Yearly	No stratification	---
	Number of older adults who score 0 or 1 on the delirium item on the Clinical Assessment Protocol	InterRAI	Yearly	No stratification	---
	Number of older adults who score 0, 1, or 2 on the communication item on the Clinical Assessment Protocol	InterRAI	Yearly	No stratification	---
	Number of older adults who score 0, 1, or 2 on the mood item on the Clinical Assessment Protocol	InterRAI	Yearly	No stratification	---
	Number of older adults who score 0, 1, or 2 on the behaviour item on the Clinical Assessment Protocol	InterRAI	Yearly	No stratification	---
Vaccine Preventable Diseases (VPDs)					
VPD notifications	Number of notifications for the top 5 most common diseases vaccine preventable diseases	Institute of Environmental Science and Research	By notification	G, A, E, L, DS	Single ages
VPD hospital admissions	Number of hospitalisations for the top 5 most common vaccine preventable disease that leads to hospitalisation	Ministry of Health	21 days	G, A, E, L, D, DS	Single ages
VPD outbreaks	Number of outbreaks by vaccine preventable disease	Institute of Environmental Science and Research	By notification	L	---

Measure	Data definition	Data source	Update frequency	Data stratified by	Data available by age
Enteric Diseases					
Enteric disease notifications	Number of notifications for the top 5 most common enteric diseases	Institute of Environmental Science and Research	By notification	G, A, E, L, DS	Single ages
Enteric disease hospital admissions	Number of hospitalisations for the top 5 most common enteric diseases that leads to hospitalisation	Ministry of Health	21 days	G, A, E, L, D, DS	Single ages
Enteric disease outbreaks	Number of outbreaks by enteric disease	Institute of Environmental Science and Research	By notification	L	---
Other Communicable Diseases					
Hepatitis B notifications	Number of Hepatitis B notifications	Institute of Environmental Science and Research	By notification	G, A, E, L, DS	Single ages
Hepatitis C notifications	Number of Hepatitis C notifications	Institute of Environmental Science and Research	By notification	G, A, E, L, DS	Single ages
HIV notifications	Number of HIV notifications	Institute of Environmental Science and Research	By notification	G, A, E, L, DS	Single ages
Health care service utilisation					
LMC registration	Number of pregnant women registered with their lead maternity carer in their first trimester	Ministry of Health	Yearly	E, D	Prenatal
	Proportion of pregnant women who gave birth had registered with a LMC	Northland District Health Board	Daily	G, A, E, L, D	Postnatal
Midwifery home visits	Number of midwifery home visits	Ministry of Health	Weekly	G, A, E, L, D, DS	Single ages (Mother)
Primary care enrolments	Number of people enrolled with a primary health organisation	Ministry of Health	Monthly	G, A, E, L, D	Single ages
Oral health service enrolment	Number of children aged 0 – 17 – year – olds enrolled with the DHB oral health service	Northland District Health Board	Monthly	G, A, E, L, D	Single ages
	Number and proportion of adolescents aged 13 – 17 enrolled with a private dentist	Northern Regional Alliance	Quarterly	G, A, E, L	Single ages
WCTO visits	Number of infants who receive all WCTO core contacts due in their first year	Ministry of Health	Yearly	E, D	< 1
Before school checks	Number and proportion of pre-schoolers who completed their before school checks	Ministry of Health	Yearly	E, D	Pre-schoolers
Oral health service utilisation	Proportion of all eligible children aged 5 years examined by a dental professional	Ministry of Health	Yearly	E, D	Age 5
	Proportion of all eligible adolescence in Year 8 who were examined by a dental professional	Ministry of Health	Yearly	E, D	Year 8 students
	Proportion of respondents who had visited a dental health care worker	Ministry of Health	3 yearly	G, A, E, D	1 – 4, 5 – 9, 10 – 14, 15 – 24, 25 – 44, 45 – 64, 65+
	Number of people who have accessed dental care	Northland District Health Board	Daily	G, A, E, L, D	Single ages
	Proportion of respondents who only see a dental health care worker for problems	Ministry of Health	3 yearly	G, A, E, D	15 – 24, 25 – 44, 45 – 64, 65+
Mental health admission and community care	Number and proportion of people admitted to community care	Health Quality and Safety Commission	Yearly	E	---
	Number and proportion of people admitted post-discharge to community care	Health Quality and Safety Commission	Yearly	E	---
	Number and proportion of people who are readmitted within 28 days	Health Quality and Safety Commission	Yearly	E	---
Free healthcare	Proportion of respondents who were not charged for their last GP visit	Ministry of Health	3 yearly	G, A, E, D	0 – 4, 5 – 9, 10 – 14
	Proportion of respondents who were not charged for their last practice nurse visit	Ministry of Health	3 yearly	G, A, E, D	0 – 4, 5 – 9, 10 – 14

Measure	Data definition	Data source	Update frequency	Data stratified by	Data available by age
	Proportion of respondents who were not charged for their last after – hours visit	Ministry of Health	3 yearly	G, A, E, D	0 – 4, 5 – 9, 10 – 14
Private medical insurance	Proportion of respondents covered by general medical insurance	Ministry of Health	3 yearly	G, A, E, D	0 – 4, 5 – 9, 10 – 14, 15 – 24, 25 – 44, 45 – 64, 65+
After-hours medical centre visits	Proportion of respondents who went to after – hours medical centre in the last 12 months	Ministry of Health	3 yearly	G, A, E, D	0 – 4, 5 – 9, 10 – 14, 15 – 24, 25 – 44, 45 – 64, 65+
	Mean number of after – hours medical centre visits	Ministry of Health	3 yearly	G, A, E, D	0 – 4, 5 – 9, 10 – 14, 15 – 24, 25 – 44, 45 – 64, 65+
Practice nurse visits	Proportion of respondents who went to a practice nurse without seeing a GP in the last 12 months	Ministry of Health	3 yearly	G, A, E, D	0 – 4, 5 – 9, 10 – 14, 15 – 24, 25 – 44, 45 – 64, 65+
	Mean number of practice nurse visits without seeing a GP	Ministry of Health	3 yearly	G, A, E, D	0 – 4, 5 – 9, 10 – 14, 15 – 24, 25 – 44, 45 – 64, 65+
GP visits	Proportion of respondents who went to a GP in the last 12 months	Ministry of Health	3 yearly	G, A, E, D	0 – 4, 5 – 9, 10 – 14, 15 – 24, 25 – 44, 45 – 64, 65+
	Mean number of GP visits	Ministry of Health	3 yearly	G, A, E, D	0 – 4, 5 – 9, 10 – 14, 15 – 24, 25 – 44, 45 – 64, 65+
Prescriptions	Number of antibiotics prescribed per month	Ministry of Health	Monthly	G, A, E, L, RU	Single ages
	Rate per 100 population dispensed one or more systemic antibiotics in a year	Health Quality and Safety Commission	Yearly	G, A, E	0-4, 5-9, 10-14, 15-24, 25-44, 45-64, 65-74, 65+, 75-84, 85+
	Number of antidepressants prescribed per month	Ministry of Health	Monthly	G, A, E, L, RU	Single ages
	Number of anxiolytics prescribed per month	Ministry of Health	Monthly	G, A, E, L, RU	Single ages
	Number of opiates prescribed per month	Ministry of Health	Monthly	G, A, E, L, RU	Single ages
	Number of beta blockers prescribed per month	Ministry of Health	Monthly	G, A, E, L, RU	Single ages
	Average number of prescriptions per person receiving medications	Ministry of Health	Monthly	G, A, E, L, RU	Single ages
Proportion of older adults prescribed five or more unique long term medications	Health Quality and Safety Commission	Yearly	G, A, E	65-74 75-84, 85+	
Older adults in aged residential care	Number of older adults living in residential care	Statistics New Zealand	5 yearly	A, L	50 – 54, ..., 80 – 84, 85+
Patients with high health needs	Number of patients where a high use health card was used	Ministry of Health	Monthly	G, A, E, L, D	Single ages
	Number of patients by subsidy status	Ministry of Health	Monthly	G, A, E, L, D	Single ages
	Number of people using a community services card	Ministry of Health	Monthly	G, A, E, L, D	Single ages
Access to healthcare services	Proportion of respondents that did not see a GP due to cost in the last 12 months	Ministry of Health	3 yearly	G, A, E, D	0-4, 5-9, 10-14, 15-24, 25-44, 45-64, 65+
	Proportion of respondents that did not see a GP due to a lack of child care in the last 12 months	Ministry of Health	3 yearly	G, A, E, D	0-4, 5-9, 10-14, 15-24, 25-44, 45-64, 65+
	Proportion of respondents that had a medical problem after hours but did not visit a medical centre due to cost in the last 12 months	Ministry of Health	3 yearly	G, A, E, D	0-4, 5-9, 10-14, 15-24, 25-44, 45-64, 65+
	Proportion of respondents that did not fill a prescription due to cost in the last	Ministry of Health	3 yearly	G, A, E, D	0-4, 5-9, 10-14, 15-

Measure	Data definition	Data source	Update frequency	Data stratified by	Data available by age
	12 months				24, 25-44, 45-64, 65+
	Proportion of respondents that did not see a GP due to lack of transport in the last 12 months	Ministry of Health	3 yearly	G, A, E, D	0-4, 5-9, 10-14, 15-24, 25-44, 45-64, 65+
	Proportion of respondents that had a medical problem afterhours but did not visit a medical centre due to lack of transport in the last 12 months	Ministry of Health	3 yearly	G, A, E, D	0-4, 5-9, 10-14, 15-24, 25-44, 45-64, 65+
	Proportion of respondents who were unable to get an appointment with a GP, nurse or other health worker at their usual medical centre within 24 hours in the last 12 months	Ministry of Health	3 yearly	G, A, E, D	0-4, 5-9, 10-14, 15-24, 25-44, 45-64, 65+
	Proportion of people who wanted to see a GP but couldn't get it	Health Quality and Safety Commission	Yearly	G, A, E	15-24, 25-44, 45-64, 65-74, 75+
	Proportion of people who did not visit a GP due to cost in the last 12 months	Health Quality and Safety Commission	Yearly	G, A, E	15-24, 25-44, 45-64, 65-74, 75+
	Proportion of people who stated why cost stopped them from seeing a GP or nurse, by reason	Health Quality and Safety Commission	Yearly	G, A, E	15-24, 25-44, 45-64, 65-74, 75+
	Proportion of people who reported that costs stopped people picking up a prescription	Health Quality and Safety Commission	Yearly	G, A, E	15-24, 25-44, 45-64, 65-74, 75+
	Proportion of people who reported they were involve in decisions about their care as much as they would have liked to be	Health Quality and Safety Commission	Yearly	G, A, E	15-24, 25-44, 45-64, 65-74, 75+
	Proportion of people who reported that their GP or nurse spent enough time with them	Health Quality and Safety Commission	Yearly	G, A, E	15-24, 25-44, 45-64, 65-74, 75+
	Proportion of people who reported why they did not follow the instructions when they took the medication by reason provided	Health Quality and Safety Commission	Yearly	G, A, E	15-24, 25-44, 45-64, 65-74, 75+
Patient experience					
Patient experience	Proportion of parent respondents who have definite trust and confidence in their child's GP	Ministry of Health	3 yearly	G, A, E, D	0-4, 5-9, 10-14
	Proportion of parent respondents that agree that GP that are good at explaining health conditions	Ministry of Health	3 yearly	G, A, E, D	0-4, 5-9, 10-14
	Proportion of respondents who have definite trust and confidence in their GP	Ministry of Health	3 yearly	G, A, E, D	15-24, 25-44, 45-64, 65+
	Proportion of respondents that agree that GP that are good at explaining health conditions	Ministry of Health	3 yearly	G, A, E, D	15-24, 25-44, 45-64, 65+
	Proportion of respondents who report their GP involve them in decisions	Ministry of Health	3 yearly	G, A, E, D	15-24, 25-44, 45-64, 65+
	Number and proportion of older adults who score 0, 1, 2, or 3 on the pressure ulcers item on the Clinical Assessment Protocol	interRAI	Yearly	No stratification	Not available
Hospital admissions					
ASH	Number of hospitalisations for the top five most common ambulatory sensitive hospitalisation conditions	Ministry of Health	Quarterly	A, E, DS	0 – 4, 45-64
	Number of hospitalisations for the top five most common ambulatory sensitive hospitalisation conditions	Northland District Health Board	Daily	G, A, E, L, D, DS	Single ages
ED presentations	Proportion of respondents who present to ED	Ministry of Health	3 yearly	G, A, E, D	0-4, 5-9, 10-14, 15-24, 25-44, 45-64, 65+
	Number of presentations for the top five conditions seen in the emergency department	Northland District Health Board	Daily	G, A, E, L, D	Single ages
	Number of presentations to ED where alcohol was consumed prior to the	Northland District Health Board	Daily	G, A, E, L, D	Single ages

Measure	Data definition	Data source	Update frequency	Data stratified by	Data available by age
	presentation				
Intensive care unit	Proportion of people readmitted to ICU in the same hospital admission	Health Quality and Safety Commission	Yearly	A, E	18-44, 45-64, 65-74, 75-84, 85+
	Number of ICU admissions of newborns at the time of birth	Ministry of Health	Weekly	G, A, E, L, D, DS	Single ages
	Number of newborn ICU admissions within 92 days after birth	Ministry of Health	Weekly	G, A, E, L, D, DS	Single ages
	Number of mothers ICU admissions for any postnatal event	Ministry of Health	Weekly	E, D	Post-natal
	Number of newborn ICU admissions within 92 days after birth	Ministry of Health	Weekly	E, D	Post-natal
	The mean APACHE III score for emergency ICU admissions	Health Quality and Safety Commission	Yearly	A, E	18-44, 45-64, 65-74, 75-84, 85+
	Proportion of people admitted to ICU who were invasively ventilated	Health Quality and Safety Commission	Yearly	A, E	18-44, 45-64, 65-74, 75-84, 85+
Acute medical admissions	Number of admissions for the top five acute medical conditions	Northland District Health Board	Daily	G, A, E, L, D	Single ages
Outpatient events	Number of outpatient events in secondary care for medical and surgical events	Ministry of Health	Weekly	G, A, E, L	Single ages
Hospital discharges	Number of hospital discharges and the top five most common conditions leading to admission	Ministry of Health	21 days	G, A, E, L, D, DS	Single ages

Section 5

List of measures that are identified as gaps for the Northland population health and wellbeing indicators framework

Domain: Population

Indicator Group: Demographics

Indicator	Identified gap
Population	Sexual orientation Seasonal workers Transiency of the population

Domain: Promote

Indicator Group: Socioeconomic Environment

Indicator	Identified gap
Economy	Food insecurity indicators for children and adults
Housing	Homelessness Papakāinga housing
Social connectedness	Other discrimination and racism indicators

Domain: Protect

Indicator Group: Climate Change

Indicator	Identified gap
Motorized Vehicles	Average age of vehicles in the region
Health effects of climate change	Premature deaths attributable to climate change

Indicator Group: Air

Indicator	Identified gap
Air Quality	Pollen concentrations

Indicator Group: Water**Indicator** **Identified gap**

Drinking Water Quality	Quality of water in private water tanks
-------------------------------	---

Domain: Prevent**Indicator Group: Modifiable Risk Factors****Indicator** **Identified gap**

Food and drink consumption	Fast food and fizzy drink consumption among adults
-----------------------------------	--

Tobacco Use	Smoking cessation during pregnancy
--------------------	------------------------------------

Risky Alcohol Consumption	Alcohol consumption during pregnancy Alcohol consumption
----------------------------------	---

Gambling	Online gambling
-----------------	-----------------

Domain: Health Outcomes**Indicator Group: Quality of Life****Indicator** **Identified gap**

Quality of Life	Health expectancy Cultural wellbeing Quality-Adjusted Life Years (QALYs) Disability-Adjusted Life Years (DALYs) Years Lived with Disability (YLD)
------------------------	---

Indicator Group: Reproductive Health**Indicator** **Identified gap**

Pregnancies	Fertility rates Nutrition deficiency during pregnancy
--------------------	--

Indicator Group: Preventable chronic conditions**Indicator** **Identified gap**

Prevalence of preventable chronic conditions	Prevalence of Fetal Alcohol Spectrum Disorder Prevalence of stunted growth among children due to malnutrition
---	--

Indicator Group: Utilisation of Health Services	
Indicator	Identified gap
Health care service utilisation	Green prescriptions Respite care Palliative care Home and community support services Disability services

List of data sources for the Northland population health and wellbeing indicators framework

Data Sources	
Accident Compensation Corporation	Ministry of Social Development
Action for Smokefree 2025	Ministry of Transport
Corrections Department New Zealand	National Institute of Water and Atmospheric Research
Department of Conservation	National Screening Unit
Department of Internal Affairs	Nationwide Service Framework Library
Education Counts	New Zealand Audiological Society
Environmental Protection Authority	New Zealand Birth Defects Registry
EpiSurv	New Zealand Family Violence Clearinghouse
Far North District Council	New Zealand Police
Health Quality and Safety Commission	New Zealand Qualifications Authority (NZQA)
HealthScape	New Zealand Transport Agency
Immigration New Zealand	New Zealand Treasury
Infometrics	Northern Regional Alliance
Inland Revenue Department	Northland District Health Board
Institute of Environmental Science and Research	Northland Regional Council
InterRAI	Private Health Practitioners in Northland
Kaipara District Council	Public Health Units
Land Information New Zealand	Real Estate Institute of New Zealand
Land, Air, Water Aotearoa (LAWA)	Retrofitting providers
Mahitahi Hauora - Primary Healthcare Entity	Southern Monitoring Services Limited
Māori Health providers	Sport New Zealand
Ministry for Primary Industries	Statistics New Zealand
Ministry for the Environment	Tobacco control data repository
Ministry of Business, Innovation and Employment	University of Auckland
Ministry of Health	University of Otago
Ministry of Justice	Whangarei District Council