

School community health/ wellbeing outcomes achieved through HPS include:

- Improved presence, engagement, achievement through quality relationships and whānau wellbeing
- Improved outcomes for the whole school community
- Improved health/wellbeing knowledge, skills, attitudes and behaviours
- Development of supportive school policies, practices and environments
- Improved access to health, education and social services
- Increased partnerships and collaboration
- HPS inquiry processes embedded into schools existing planning, review and reporting cycles.

What do schools say about HPS?

HPS has allowed us to strengthen our self-review practices around health and wellbeing and is helping us to build capacity in ensuring that we work towards addressing needs and improving equity, whānau wellbeing and educational outcomes for all members within our school community.

Peta Lindstrom—Deputy Principal
Our Lady Star of the Sea



HPS values

Whanaungatanga – strengthening relationships
Kotahitanga – partnership in learning, reciprocity
Rangitiratanga – uplifting, growing, leadership
Te Tiriti O Waitangi – partnership, participation and protection

**For further information and examples about
Health Promoting Schools
please visit our website <http://hps.tki.org.nz>
and contact your local facilitator.**

Health Promoting Schools

<http://hps.tki.org.nz>

To enhance whānau wellbeing through evidence informed practice with a focus on reducing inequities in health and educational outcomes

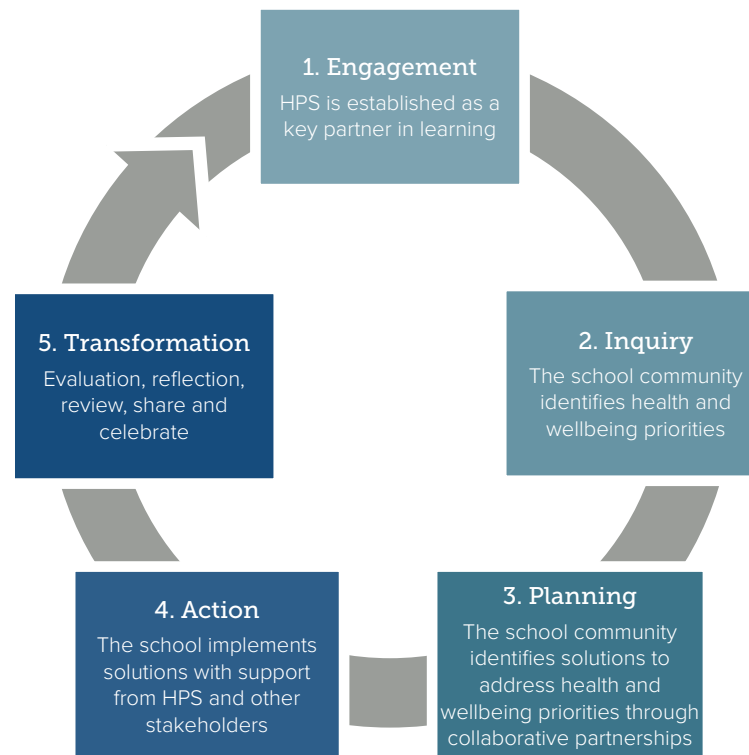
What is a Health Promoting School (HPS)?

A HPS school works with their school community to identify and address health and wellbeing priorities.

HPS in Aotearoa:

- Builds on what schools already do
- Uses an evidence-based best practice framework
- Supports school communities to own and drive the process
- Works in partnership with schools, health and social services
- Has an explicit focus on members of the school community experiencing the greatest inequities
- Supports bi-cultural partnership between Maori and non-Maori
- Demonstrates values driven practice at every level of HPS delivery.

HPS Inquiry Cycle



The HPS Inquiry Cycle in action:

- Strengthens schools' existing planning, delivery, review and reporting processes
- Supports school communities to retain successful practices and implement new actions that meet their communities health and wellbeing priorities
- Is facilitated by the HPS workforce which enables school communities to implement actions that improve health, education and social outcomes
- Measures impact through improvements in equity, whānau wellbeing and educational outcomes in school communities.